



**FOR LEASE**

• 1,150 - 4,378 Square Foot Units

## FEATURES:

### OFFICE FEATURES:

- Air Conditioned/Heated
- Blinds/Carpeted
- Coffee Bar

### WAREHOUSE FEATURES:

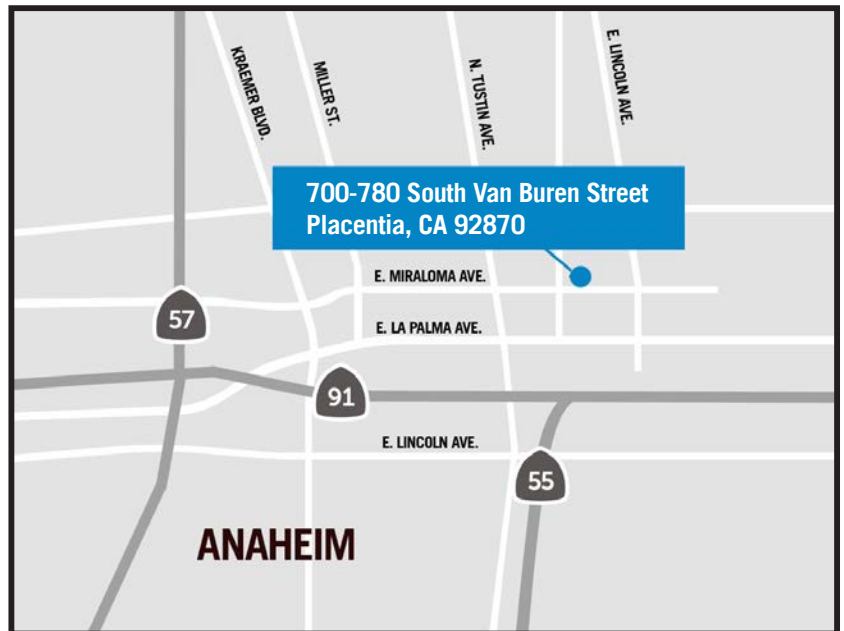
- Bonus Mezzanine
- Min. 100 AMP, 3 Phase Power
- 10' x 12' Overhead Doors
- 18' Clearance
- Skylights
- Sealed Floors

### OTHER FEATURES:

- Exterior Security Lighting
- Nicely Landscaped



**700-780 South Van Buren Street  
Placentia, CA 92870**



This information has been furnished from sources which we deem reliable; however, we do not guarantee its accuracy and assume no liability. Do not rely on any of the information contained herein without verifying it yourself directly with the listing broker or owner.

## FOR FURTHER DETAILS:

### REN GLANZ

ren@tricoREALTY.com  
License #01192242

### JOHN PAK

john@tricoREALTY.com  
License #01483069

## Trico Realty, Inc.

3100-A Pullman Street  
Costa Mesa, CA 92626  
(714) 751-4420 • License #00342120

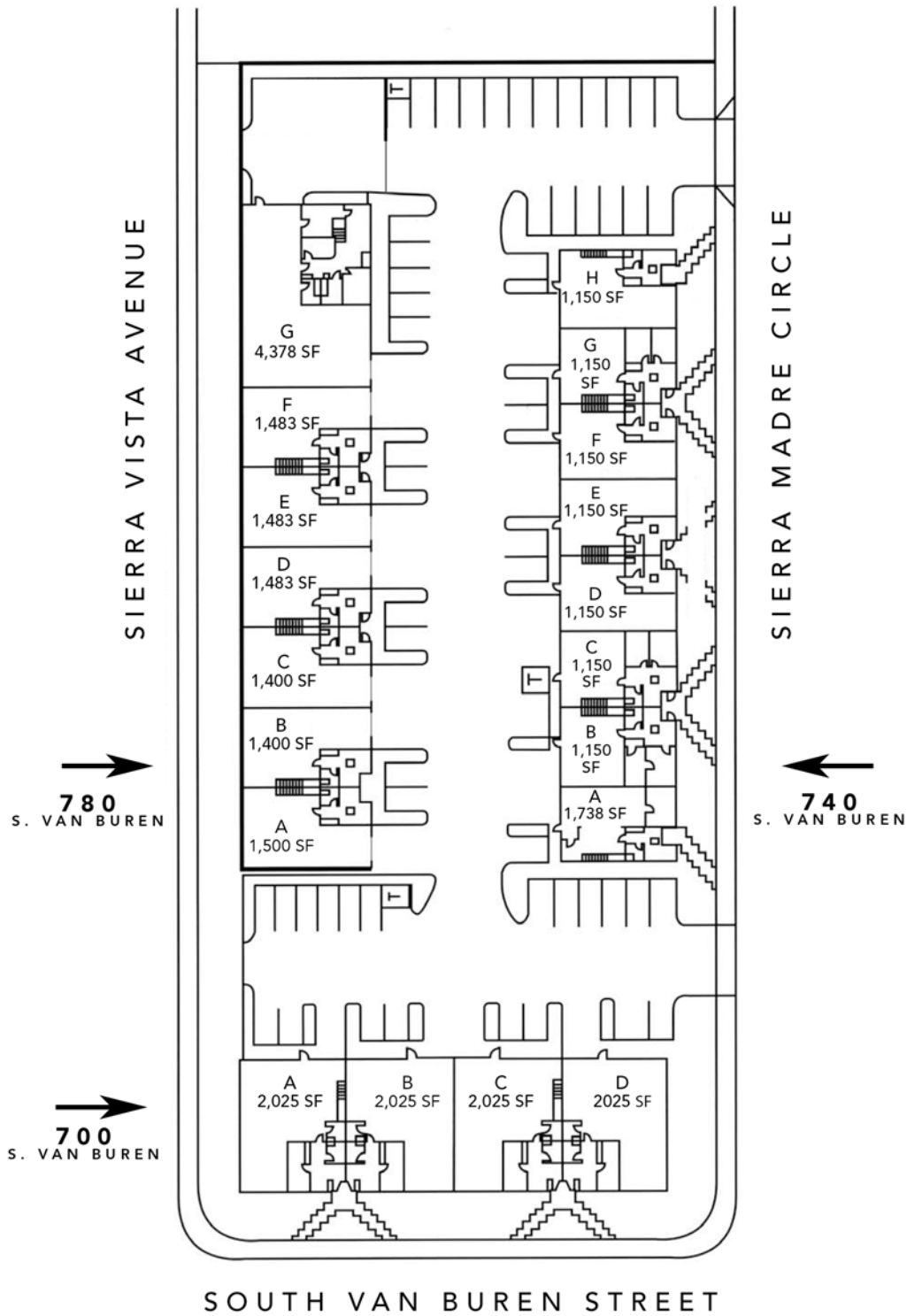
For additional information  
Visit our Website at [www.TricoRealty.com](http://www.TricoRealty.com)



700-780 South Van Buren Street  
Placentia, CA 92870

**FOR LEASE**

• 1,150 - 4,378 Square Foot Units



**Trico Realty, Inc.**

3100-A Pullman Street  
Costa Mesa, CA 92626

(714) 751-4420 • License #00342120

For additional information

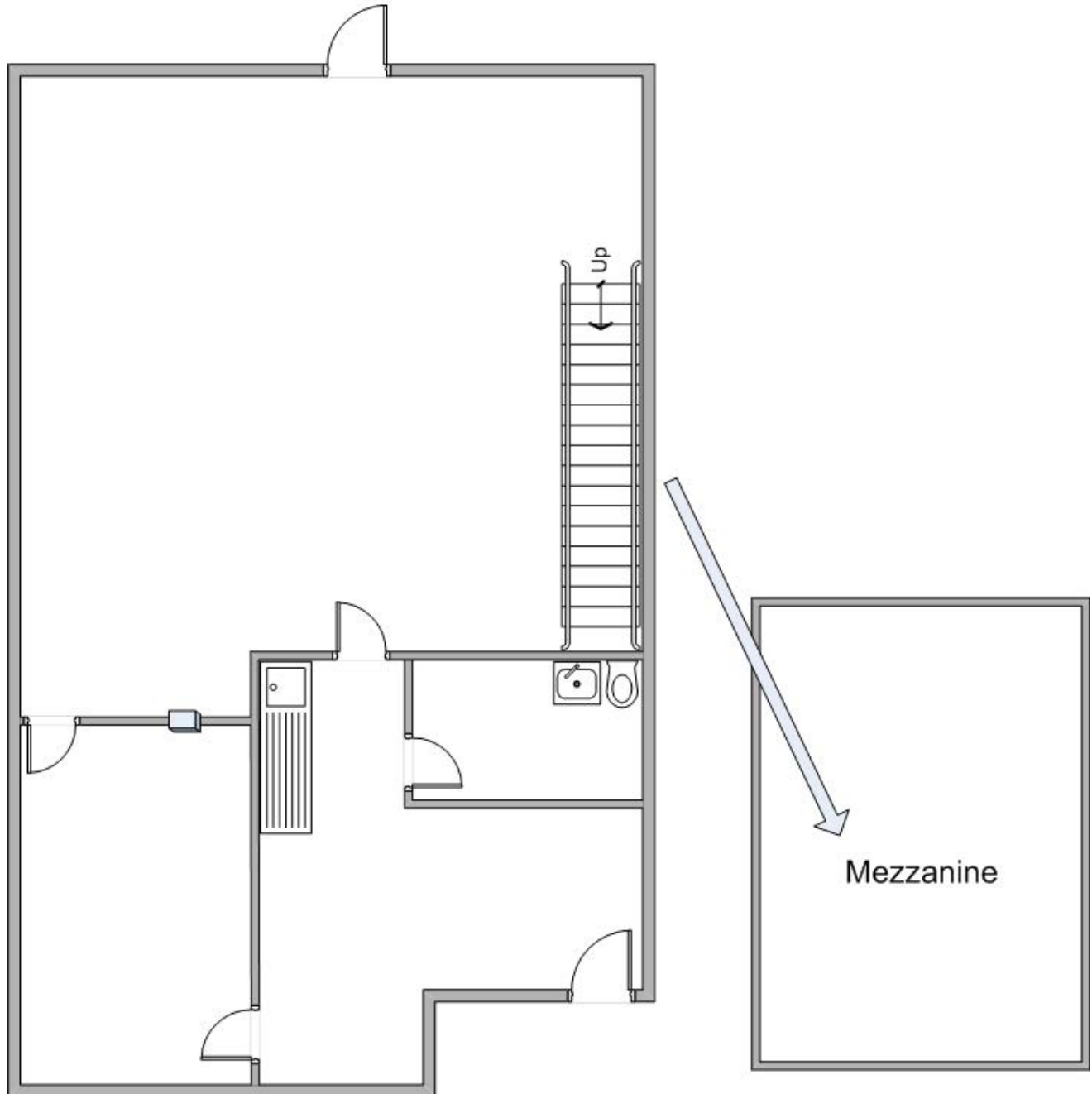
Visit our Website at [www.TricoRealty.com](http://www.TricoRealty.com)



700-780 South Van Buren Street  
Placentia, CA 92870

**FOR LEASE**

• 1,150 - 4,378 Square Foot Units



**Trico Realty, Inc.**

3100-A Pullman Street  
Costa Mesa, CA 92626

(714) 751-4420 • License #00342120

For additional information  
Visit our Website at [www.TricoRealty.com](http://www.TricoRealty.com)

