



Floor Plan

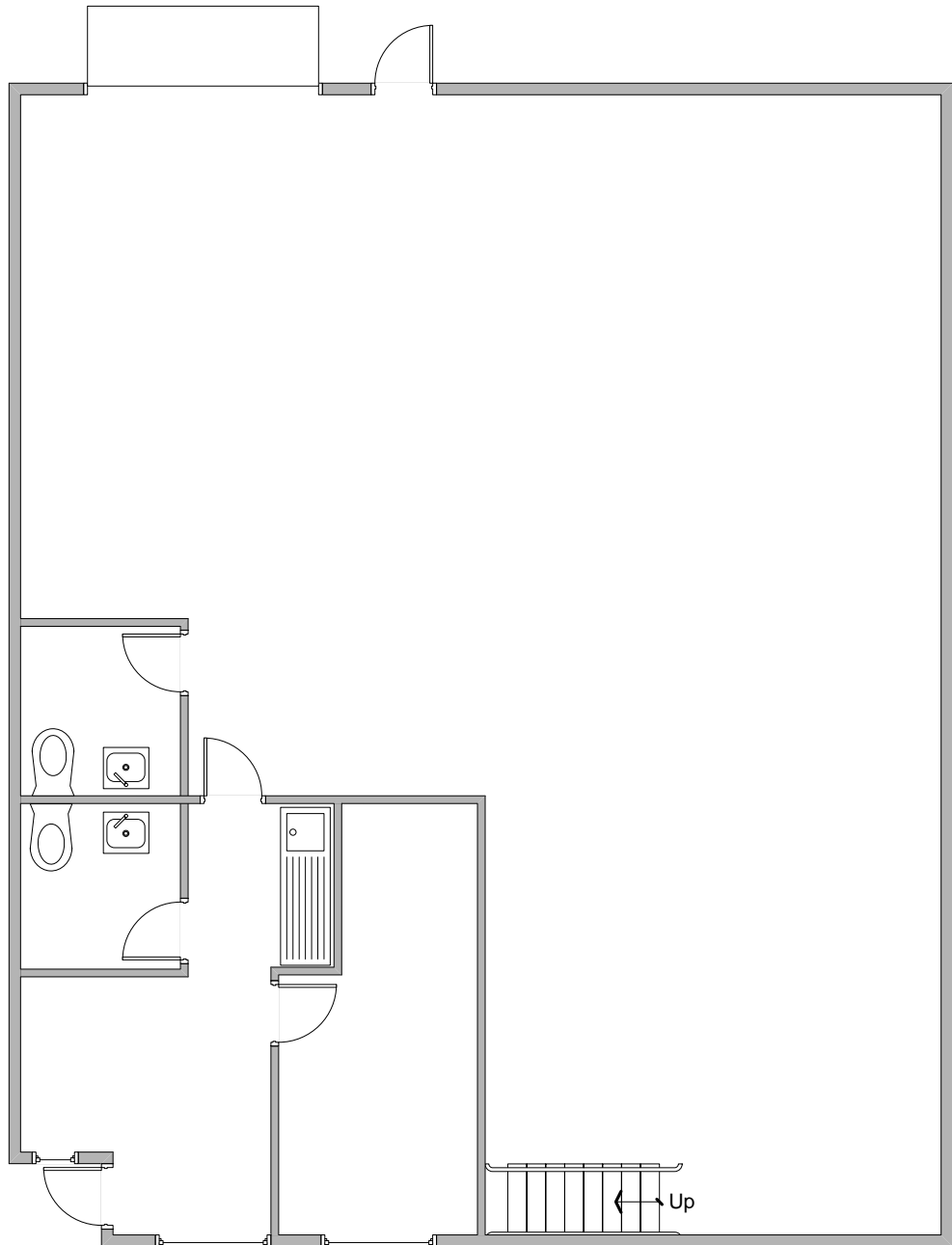
700 South Van Buren Street, Unit D, Placentia, CA 92870

For further information,
please contact:

2,025 Sq. Ft.

Ren Glanz
BRE# 01192242
ren@tricoREALTY.com
714-751-4420

Visit us at
www.tricoREALTY.com



Not Drawn to Scale

3100-A Pullman St.
Costa Mesa, CA 92626

O: 714.751.4420
F: 714.540.4579

TricoRealty.com

BROKERAGE
DEVELOPMENT
MANAGEMENT