



Floor Plan

700 South Van Buren Street, Unit B, Placentia, CA 92870

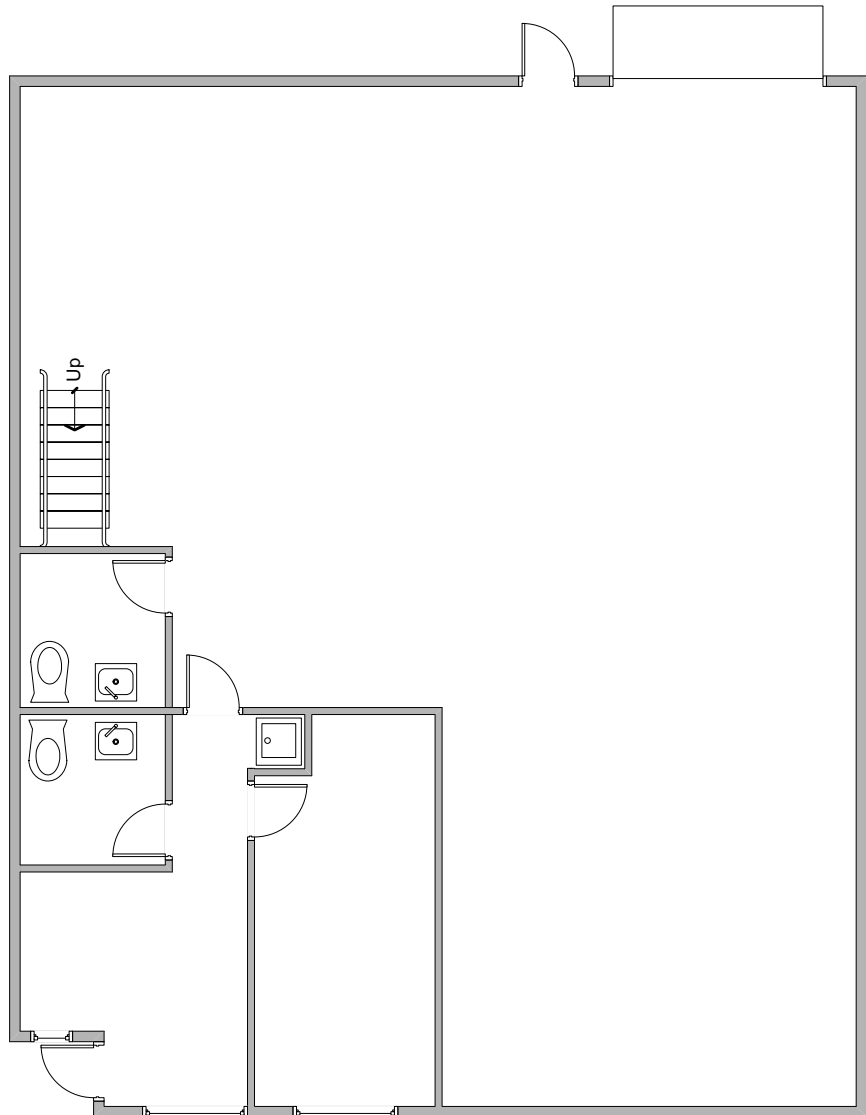
For further information,
please contact:

2,025 Sq. Ft.

Ren Glanz
BRE# 01192242
ren@tricorealty.com
714-751-4420

John Pak
BRE# 01483069
john@tricorealty.com
714-822-1647

Visit us at
www.tricorealty.com



Not Drawn to Scale

3100-A Pullman St.
Costa Mesa, CA 92626

O: 714.751.4420
F: 714.540.4579

TricoRealty.com

**BROKERAGE
DEVELOPMENT
MANAGEMENT**