



FOR LEASE

600 - 4,080 Square Foot Units

FEATURES:

- 24 Hour Access
- Office Space with HVAC
- 100 Amps, 110/208 Volts
- 3 Phase Power
- 10' X 10' Ground Level Doors
- 16' Clearance
- Excellent Access to 55, 57, & 91 Freeways
- Drive Around Building
- Street Frontage Units Available



**645-765 South State College Boulevard
Fullerton, CA 92831**

**FOR FURTHER
DETAILS:**

JOHN PAK

john@tricoREALTY.com
License #0483069



This information has been furnished from sources which we deem reliable; however, we do not guarantee its accuracy and assume no liability. Do not rely on any of the information contained herein without verifying it yourself directly with the listing broker or owner.

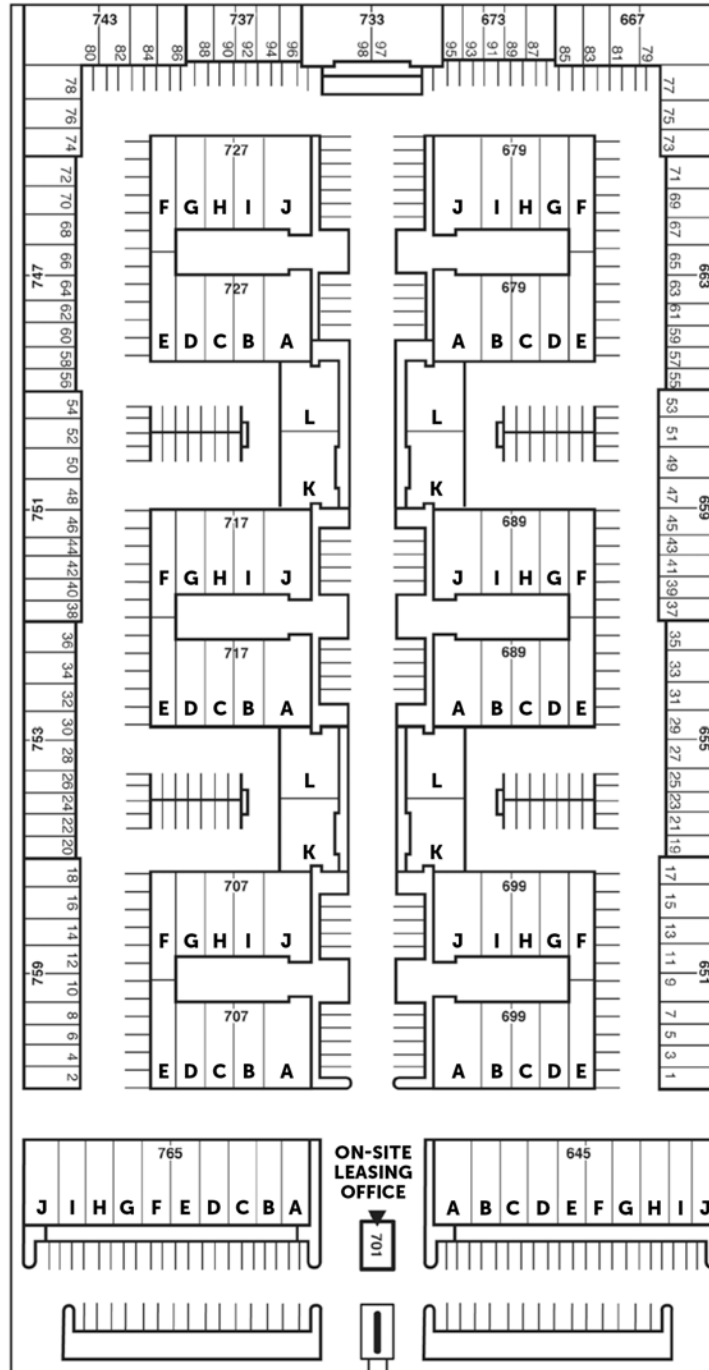
Trico Realty, Inc.

3100-A Pullman Street
Costa Mesa, CA 92626
(714) 751-4420 • License #00342120

For additional information
Visit our Website at www.TricoRealty.com



KIMBERLY AVE.

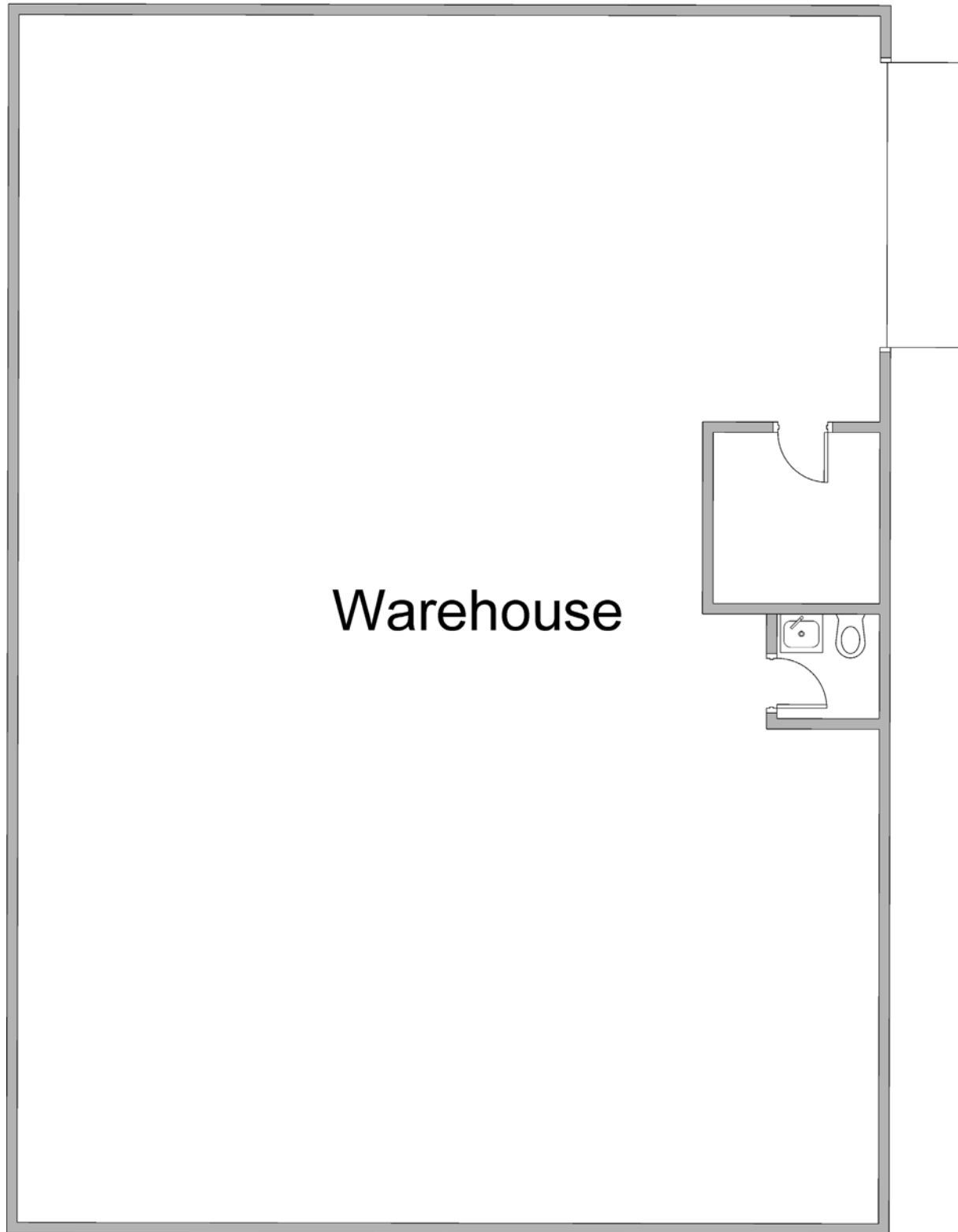


ENTRANCE

645-765 South State College Boulevard
Fullerton CA 92831

FOR LEASE

600 - 4,080 Square Foot Units



Warehouse

Trico Realty, Inc.

3100-A Pullman Street
Costa Mesa, CA 92626

(714) 751-4420 • License #00342120

For additional information
Visit our Website at www.TricoRealty.com

