



FOR LEASE

2,232 SF Industrial Unit

SITE HIGHLIGHTS:

- Business Park Environment
- Professional Property Management
- Premier Orange County Location
- Excellent Access to 57, 5, 22 Freeways
- Drive Around Building
- M-1 Zone



UNIT FEATURES:

- Ample Office & Warehouse Space
- LED Lighting
- LVP Flooring (No carpet!)
- Two Restrooms
- 17' Warehouse Clearance
- 10'x12' Grade Level Warehouse Door

**613 N. Poplar
Orange, CA 92868**



This information has been furnished from sources which we deem reliable; however, we do not guarantee its accuracy and assume no liability. Do not rely on any of the information contained herein without verifying it yourself directly with the listing broker or owner.

**FOR FURTHER
DETAILS:**

PARKER ROBERTS

parker@tricoREALTY.com

License #01994597

REN GLANZ

ren@tricoREALTY.com

License #01192242

Trico Realty, Inc.

3100-A Pullman Street
Costa Mesa, CA 92626

(714) 751-4420 • License #00342120

For additional information

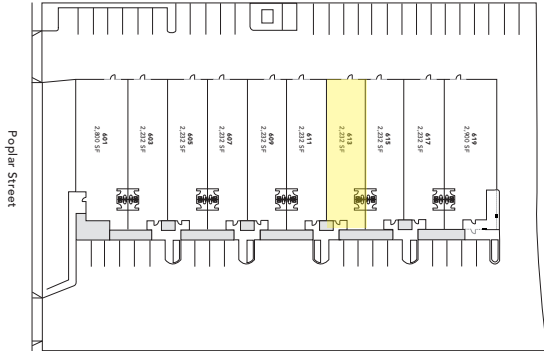
Visit Our Website at www.TricoRealty.com



FOR LEASE 2,232 SF



613 N. Poplar Street



*Floorplans Not to Scale

Power: 100A | 120/208

Clearance Height: 17'

Ground Level Doors: One 10'x12'

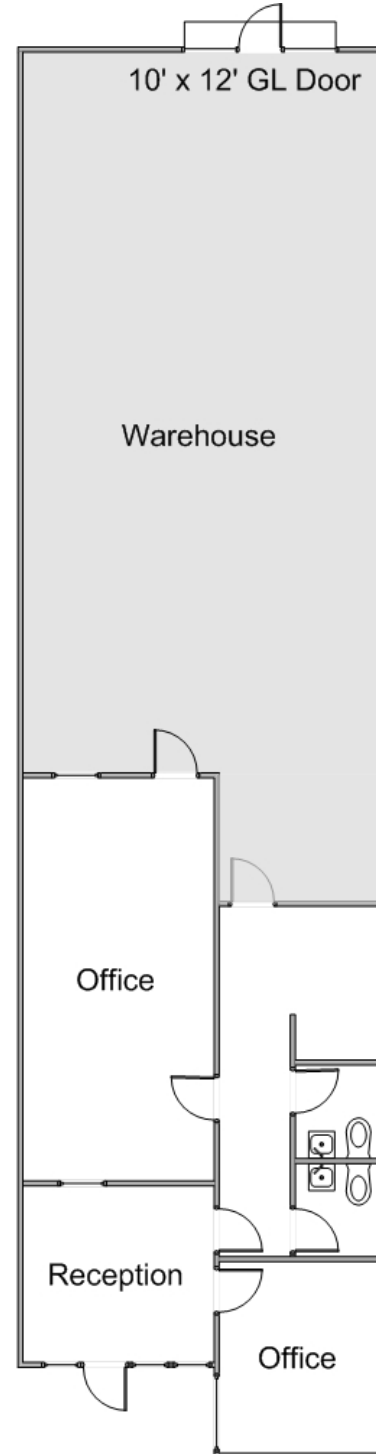
FOR FURTHER DETAILS:

PARKER ROBERTS
parker@tricoirealty.com
License #01994597

REN GLANZ
ren@tricoirealty.com
License #01192242

OFFICE: 714.751.4420

WWW.TRICOREALTY.COM





PARKER ROBERTS
parker@tricoREALTY.com
License #01994597

REN GLANZ
ren@tricoREALTY.com
License #01192242

For additional information
Visit Our Website at www.TricoRealty.com



This information has been furnished from sources which we deem reliable; however, we do not guarantee its accuracy and assume no liability. Do not rely on any of the information contained herein without verifying it yourself directly with the listing broker or owner.