



**FOR LEASE**

• 1,320 Square Foot Units

**FEATURES:**

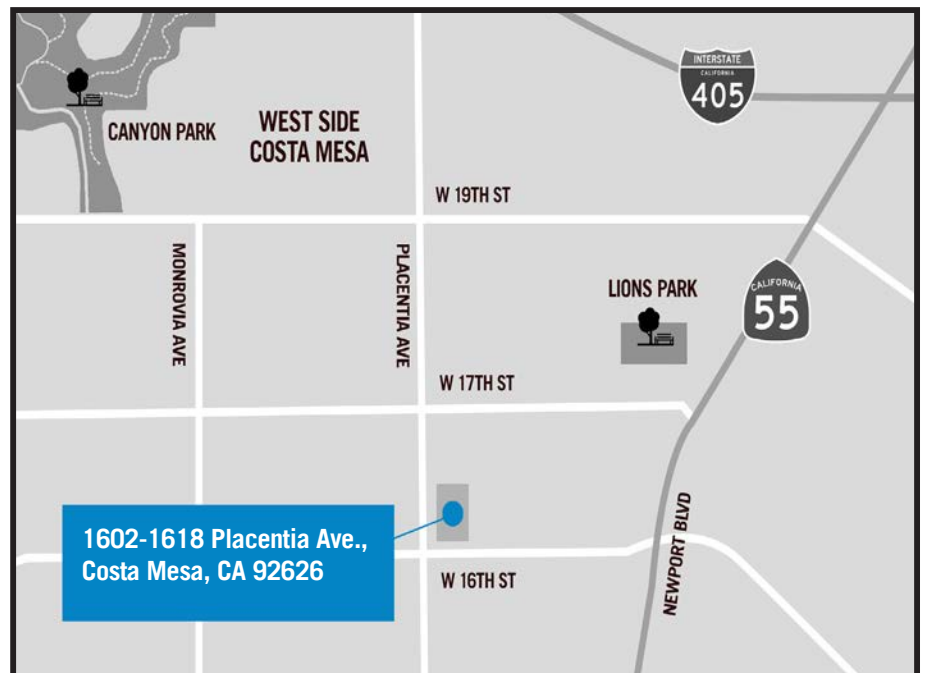
- 240 Sq. Ft. Office
- One (1) Restroom
- Close to PCH & 55 Fwy

**WAREHOUSE FEATURES:**

- One 10'x10' Overhead Door
- 100 Amps / 3 Phase Power
- 12' Clearance
- LED Lighting



**1602-1618 Placentia Ave., Costa Mesa, CA 92626**



This information has been furnished from sources which we deem reliable; however, we do not guarantee its accuracy and assume no liability. Do not rely on any of the information contained herein without verifying it yourself directly with the listing broker or owner.

**FOR FURTHER DETAILS:**

**DAVID KLING**

david@tricoREALTY.com  
License #01965659

**Trico Realty, Inc.**

3100-A Pullman Street  
Costa Mesa, CA 92626  
(714) 751-4420 • License #00342120

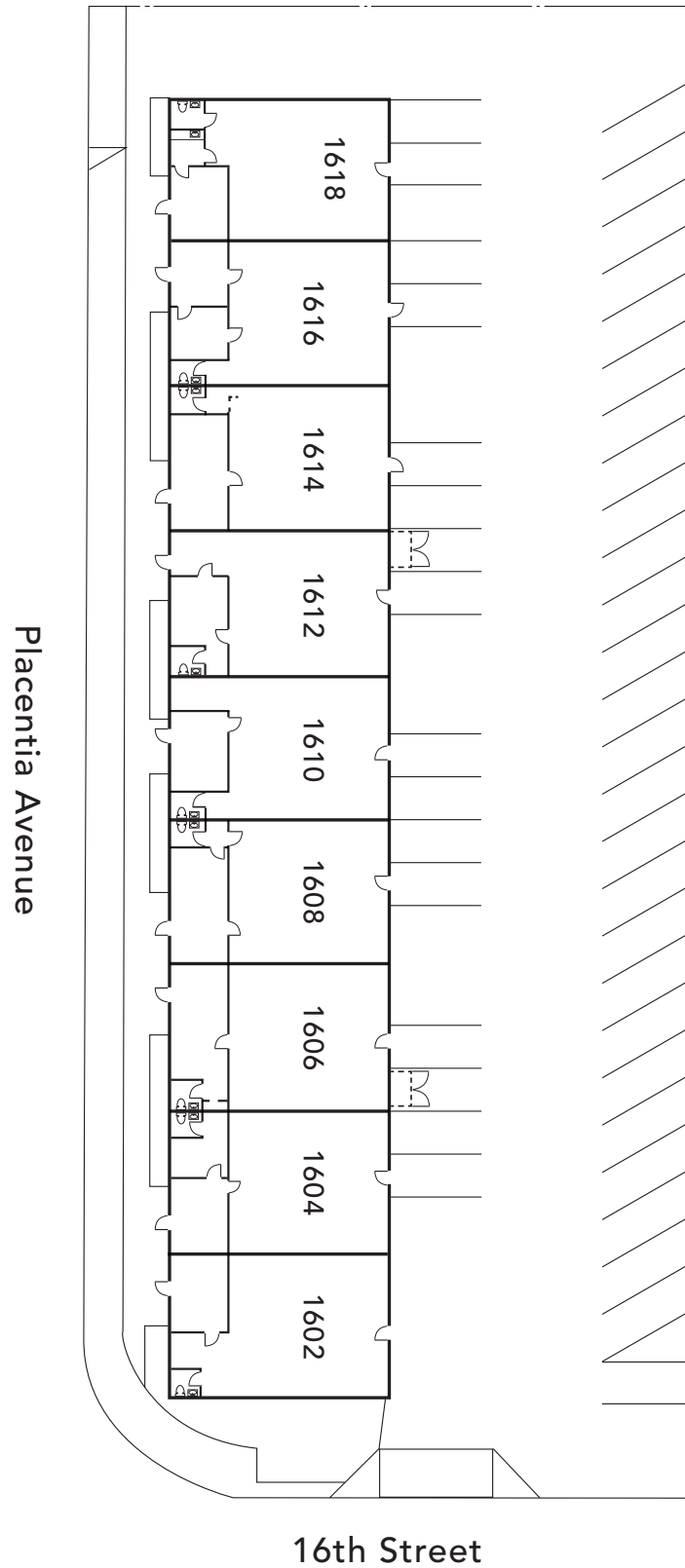
For additional information  
Visit our website at [www.TricoRealty.com](http://www.TricoRealty.com)



1602-1618 Placentia Ave.,  
Costa Mesa, CA 92626

**FOR LEASE**

• 1,320 Square Foot Units



**Trico Realty, Inc.**

3100-A Pullman Street  
Costa Mesa, CA 92626

(714) 751-4420 • License #00342120

For additional information  
Visit our Website at [www.TricoRealty.com](http://www.TricoRealty.com)





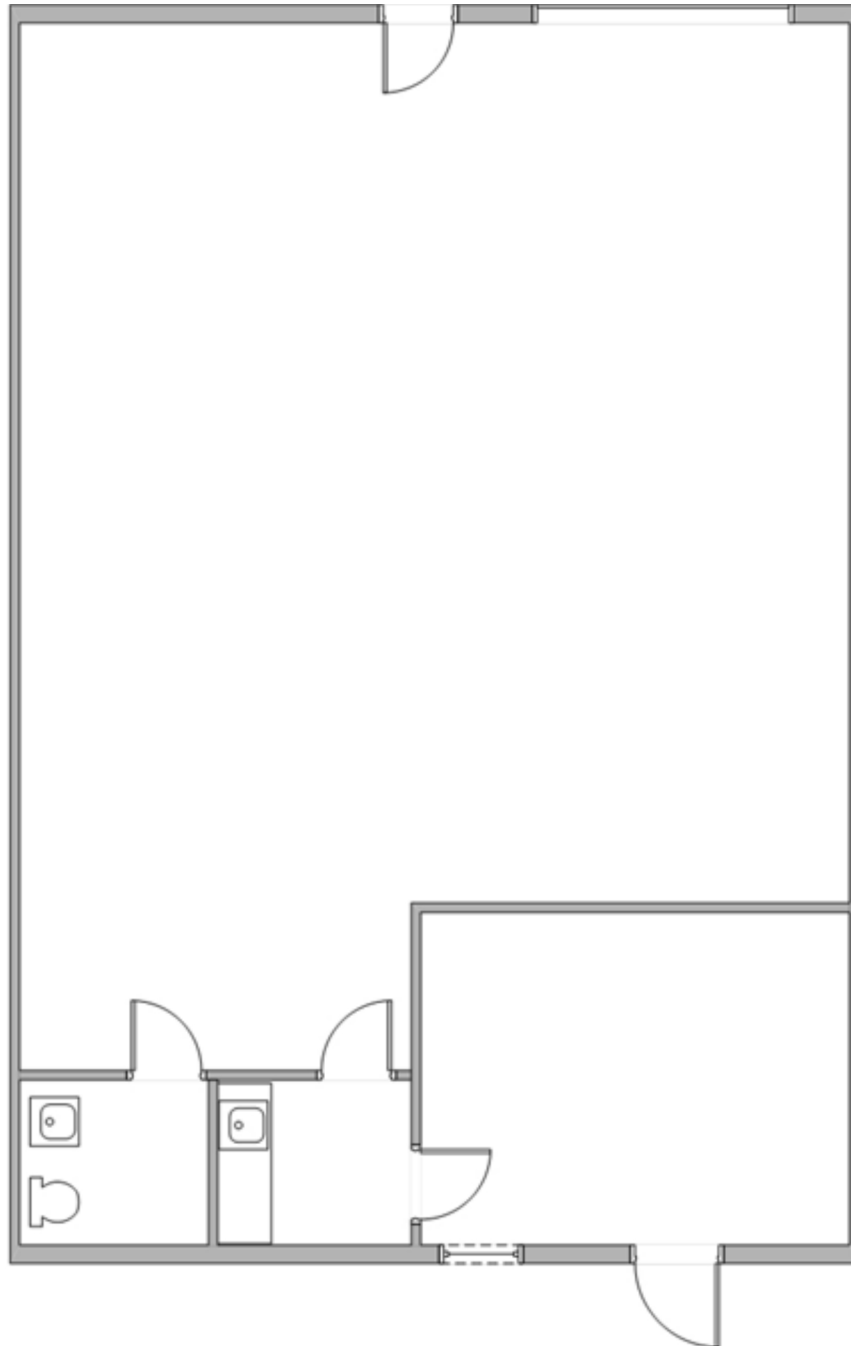
1618 Placentia Avenue, Costa Mesa, CA, 92627  
1,320 Sq. Ft.

**For Further Information,  
please contact:**

David Kling  
DRE#01965659  
david@tricoREALTY.com  
714-751-4420

Visit us at  
[www.tricoREALTY.com](http://www.tricoREALTY.com)

**Not to Scale**



3100-A Pullman St.  
Costa Mesa, CA 92626

O: 714.751.4420  
F: 714.540.4579

[TricoRealty.com](http://TricoRealty.com)

BROKERAGE  
DEVELOPMENT  
MANAGEMENT