



**FOR LEASE**

• 1,200 - 3,600 Square Foot Units

**FEATURES:**

- Pylon Signage Available
- One ground level door
- 14 ft. clearance
- Clean well maintained Park
- 100 to 200 Amps, 120/208 Volts, 3 phase
- Street Frontage on Orangethorpe
- Close to 91 and 57 freeways



**1244 -1334 East Orangethorpe Avenue,  
Fullerton, CA 92831**



This information has been furnished from sources which we deem reliable; however, we do not guarantee its accuracy and assume no liability. Do not rely on any of the information contained herein without verifying it yourself directly with the listing broker or owner.

**FOR FURTHER  
DETAILS:**

**JOHN PAK**

john@tricoirealty.com  
DRE#01483069

**Trico Realty, Inc.**

3100-A Pullman Street  
Costa Mesa, CA 92626  
(714) 751-4420 • License #00342120

For additional information  
Visit our Website at [www.TricoRealty.com](http://www.TricoRealty.com)

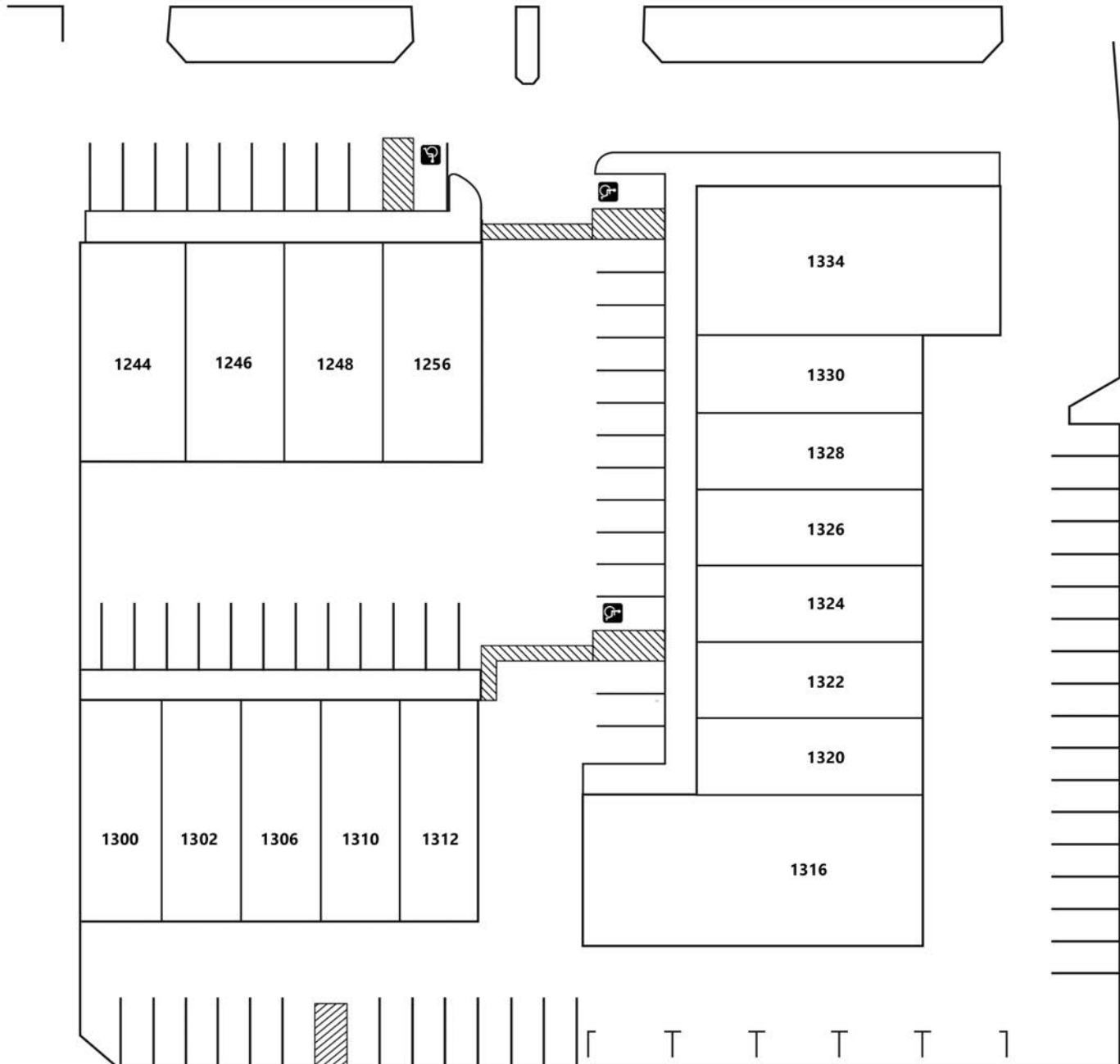


1244-1334 East Orangethorpe Ave.  
Fullerton, CA 92831

**FOR LEASE**

• 1,200 - 3,600 Square Foot Units

ORANGETHORPE AVE



**Trico Realty, Inc.**

3100-A Pullman Street  
Costa Mesa, CA 92626

(714) 751-4420 • License #00342120

For additional information

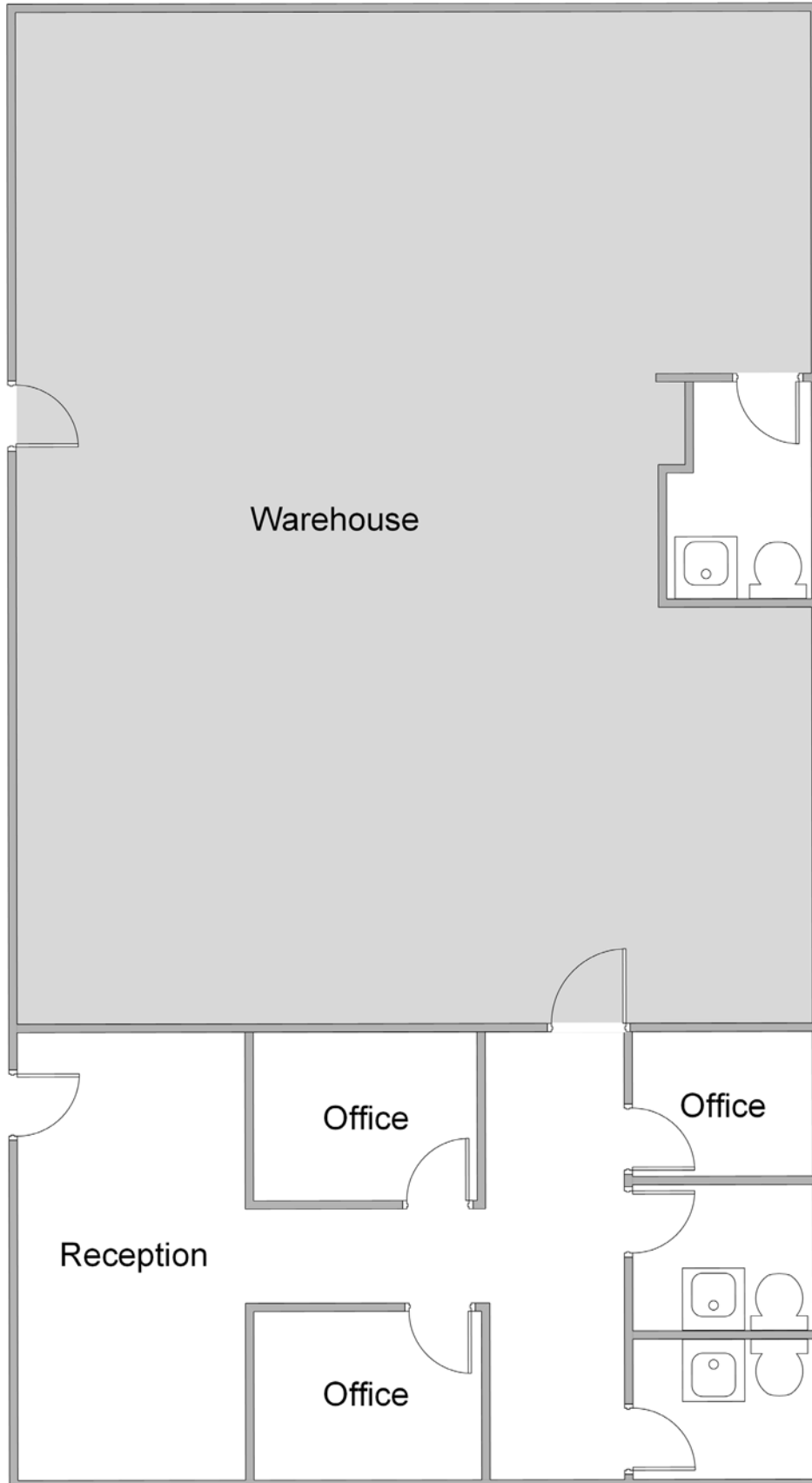
Visit our Website at [www.TricoRealty.com](http://www.TricoRealty.com)



1244-1334 East Orangethorpe Ave.  
Fullerton, CA 92831

**FOR LEASE**

• 1,200 - 3,600 Square Foot Units



**Trico Realty, Inc.**

3100-A Pullman Street  
Costa Mesa, CA 92626

(714) 751-4420 • License #00342120

For additional information  
Visit our Website at [www.TricoRealty.com](http://www.TricoRealty.com)

