



FOR LEASE

• 1,200 - 3,600 Square Foot Units

FEATURES:

- Pylon Signage Available
- One ground level door
- 14 ft. clearance
- Clean well maintained Park
- 100 to 200 Amps, 120/208 Volts, 3 phase
- Street Frontage on Orangethorpe
- Close to 91 and 57 freeways



**1244 -1334 East Orangethorpe Avenue,
Fullerton, CA 92831**



This information has been furnished from sources which we deem reliable; however, we do not guarantee its accuracy and assume no liability. Do not rely on any of the information contained herein without verifying it yourself directly with the listing broker or owner.

**FOR FURTHER
DETAILS:**

JOHN PAK

john@tricoREALTY.com
DRE#01483069

Trico Realty, Inc.

3100-A Pullman Street
Costa Mesa, CA 92626
(714) 751-4420 • License #00342120

For additional information
Visit our Website at www.TricoRealty.com

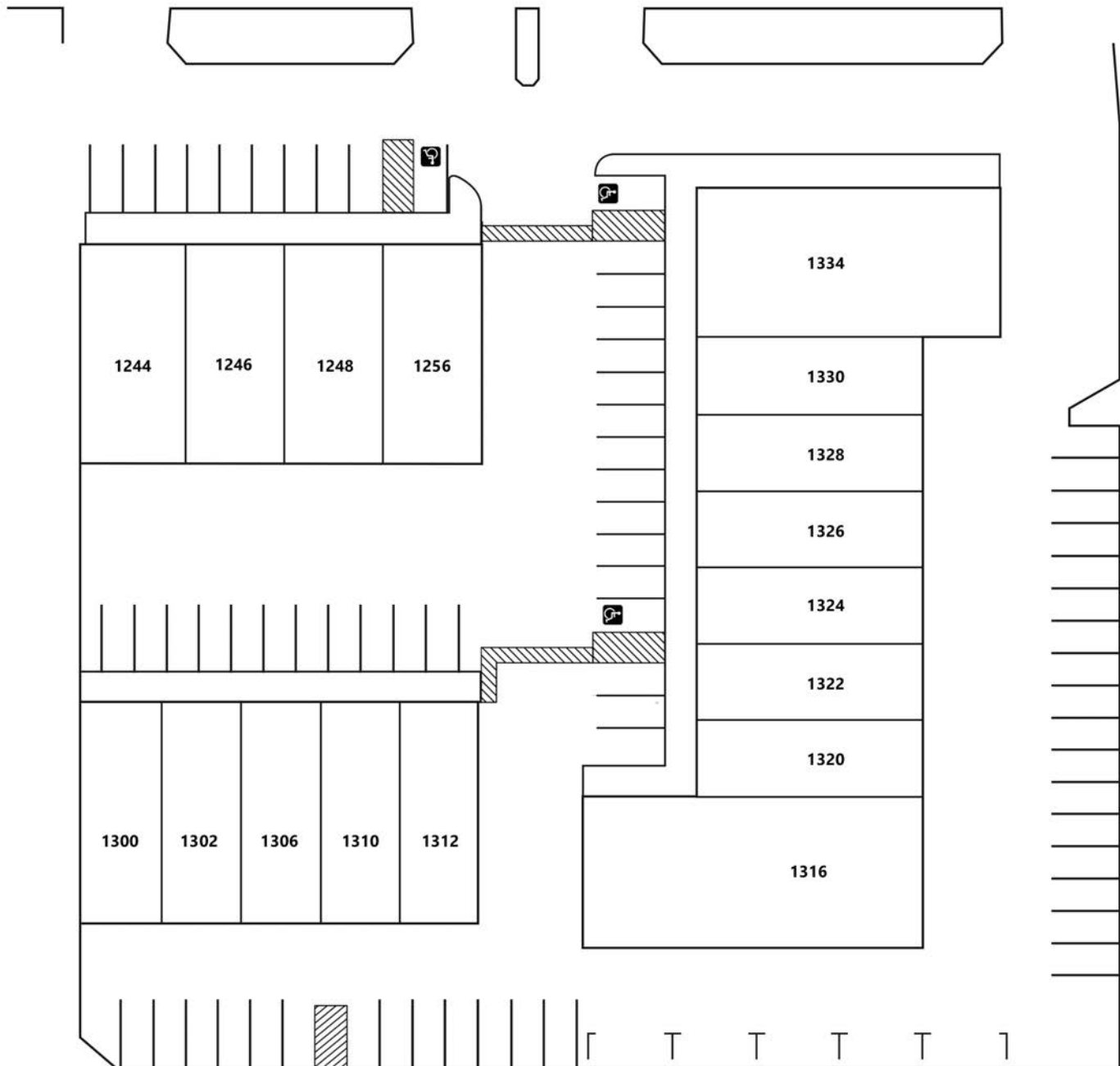


1244-1334 East Orangethorpe Ave.
Fullerton, CA 92831

FOR LEASE

• 1,200 - 3,600 Square Foot Units

ORANGETHORPE AVE



Trico Realty, Inc.

3100-A Pullman Street
Costa Mesa, CA 92626

(714) 751-4420 • License #00342120

For additional information

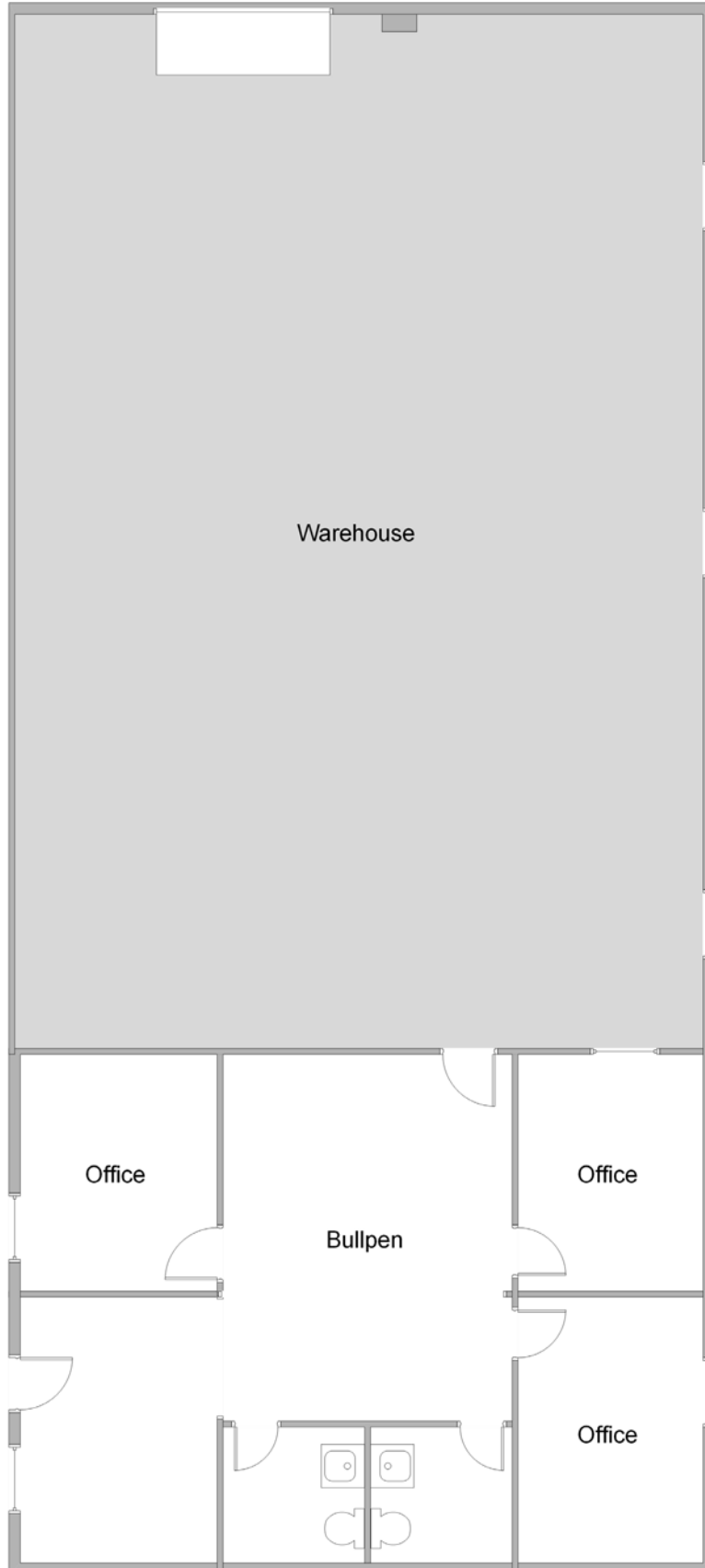
Visit our Website at www.TricoRealty.com



1244-1334 East Orangethorpe Ave.
Fullerton, CA 92831

FOR LEASE

• 1,200 - 3,600 Square Foot Units



Trico Realty, Inc.

3100-A Pullman Street
Costa Mesa, CA 92626

(714) 751-4420 • License #00342120

For additional information
Visit our Website at www.TricoRealty.com

