



FOR LEASE

6,000 SF Industrial Unit

SITE HIGHLIGHTS:

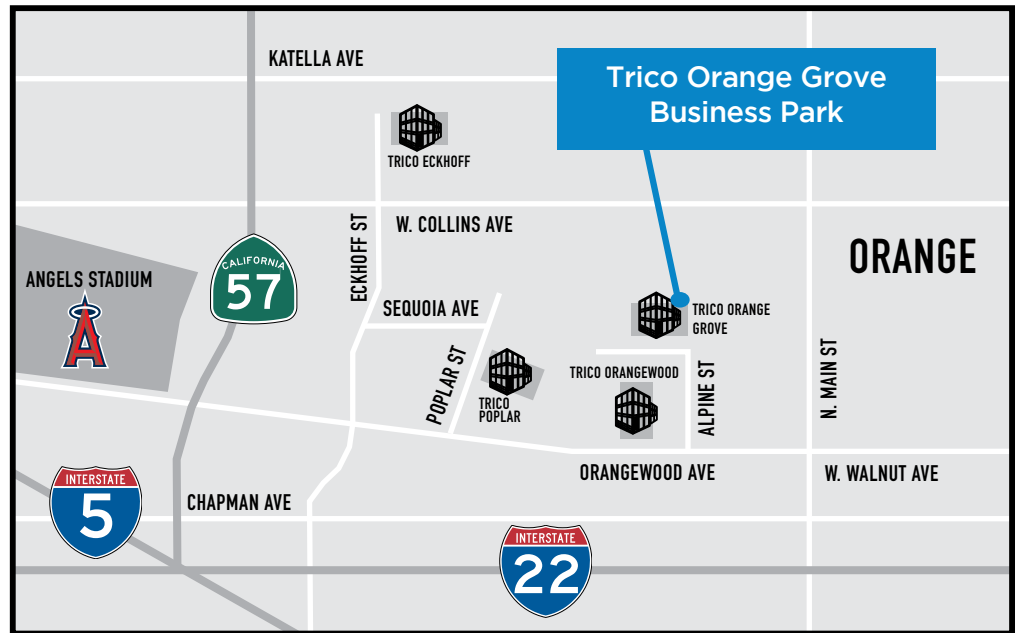
- Business Park Environment
- Professional Property Management
- Premier Orange County Location
- Excellent Access to 57, 5, 22 Freeways
- M-1 Zone

UNIT FEATURES:

- Corner Unit
- LED Lighting
- New HVAC (2021)
- Dedicated I.T. Room
- 18' Warehouse Clearance
- 10'x12' Grade Level Warehouse Door
- Drive-Around Building



**1525 Orange Grove, Unit D
Orange, CA 92868**



This information has been furnished from sources which we deem reliable; however, we do not guarantee its accuracy and assume no liability. Do not rely on any of the information contained herein without verifying it yourself directly with the listing broker or owner.

FOR FURTHER DETAILS:

PARKER ROBERTS

parker@tricoREALTY.com
License #01994597

REN GLANZ

ren@tricoREALTY.com
License #01192242

Trico Realty, Inc.

3100-A Pullman Street
Costa Mesa, CA 92626
(714) 751-4420 • License #00342120

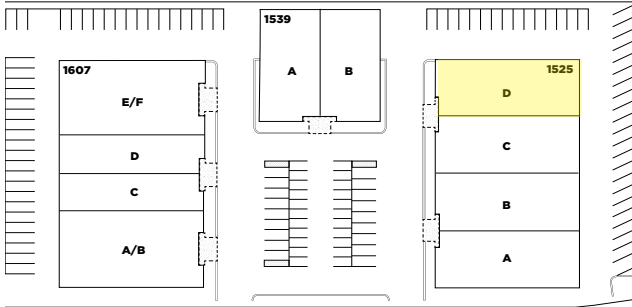
For additional information
Visit Our Website at www.TricoRealty.com



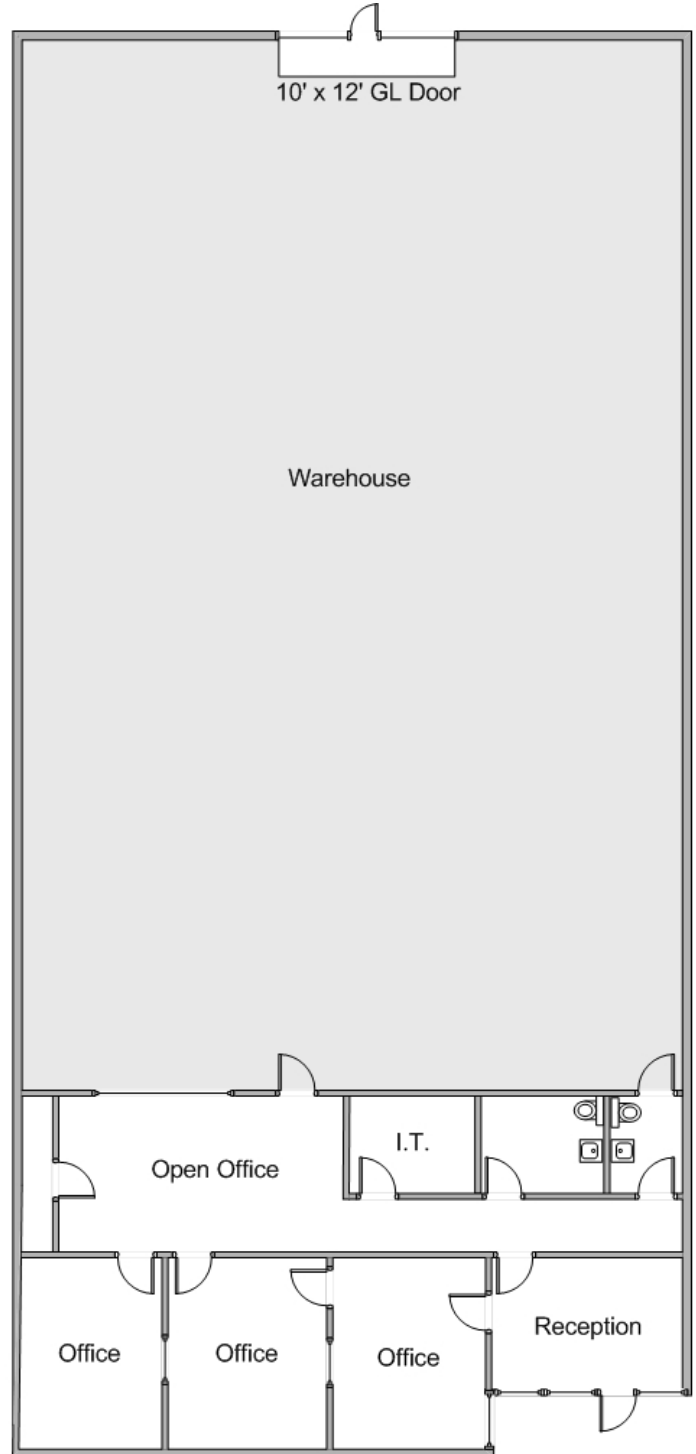
FOR LEASE 6,000 SF



1525-D W. ORANGE GROVE AVE



*Floorplans Not to Scale



Office SF: 1,436 SF

Warehouse SF: 4,564 SF

Power: 200A | 120/208 | 3 Phase

Clearance Height: 18'

Ground Level Doors: One 10'x12'

FOR FURTHER DETAILS:

PARKER ROBERTS
parker@tricorealty.com
License #01994597

REN GLANZ
ren@tricorealty.com
License #01192242

OFFICE: 714.751.4420

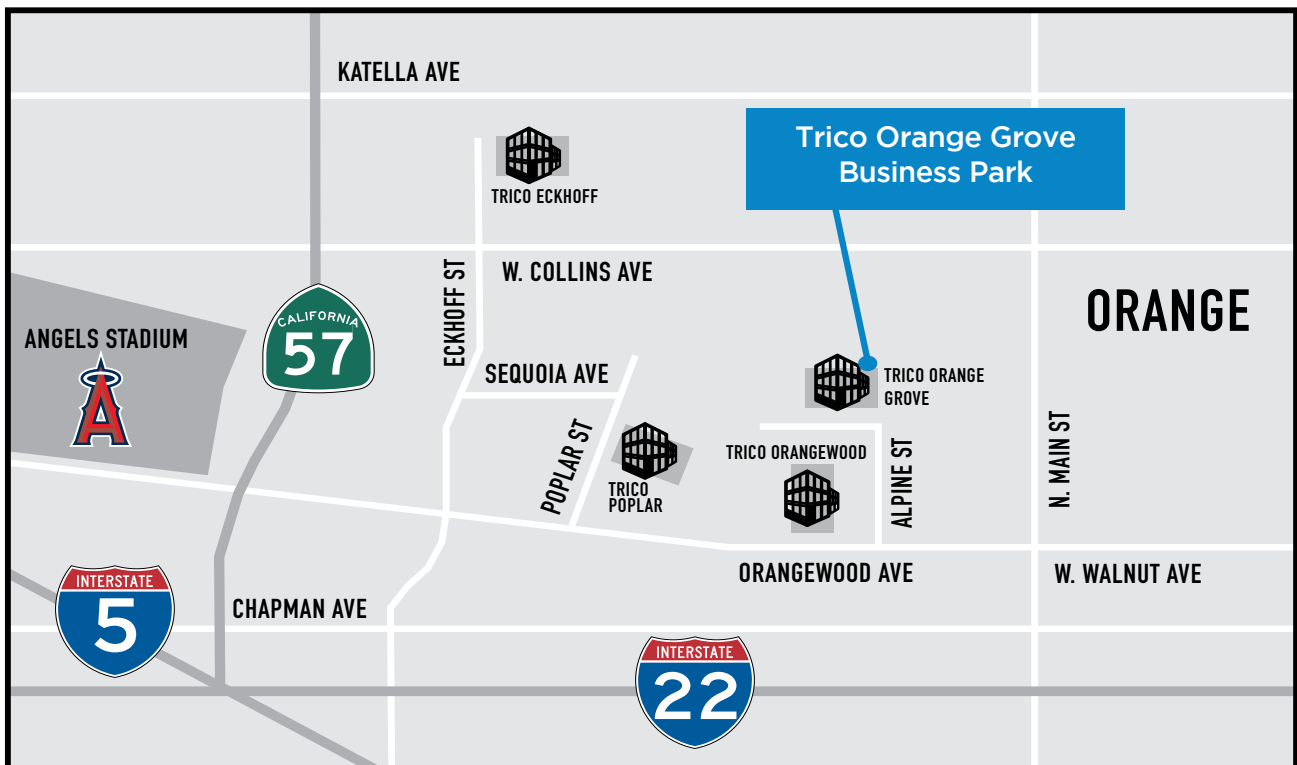
WWW.TRICOREALTY.COM



PARKER ROBERTS
parker@tricoREALTY.com
License #01994597

REN GLANZ
ren@tricoREALTY.com
License #01192242

For additional information
Visit Our Website at www.TricoRealty.com



This information has been furnished from sources which we deem reliable; however, we do not guarantee its accuracy and assume no liability. Do not rely on any of the information contained herein without verifying it yourself directly with the listing broker or owner.