



Floor Plan

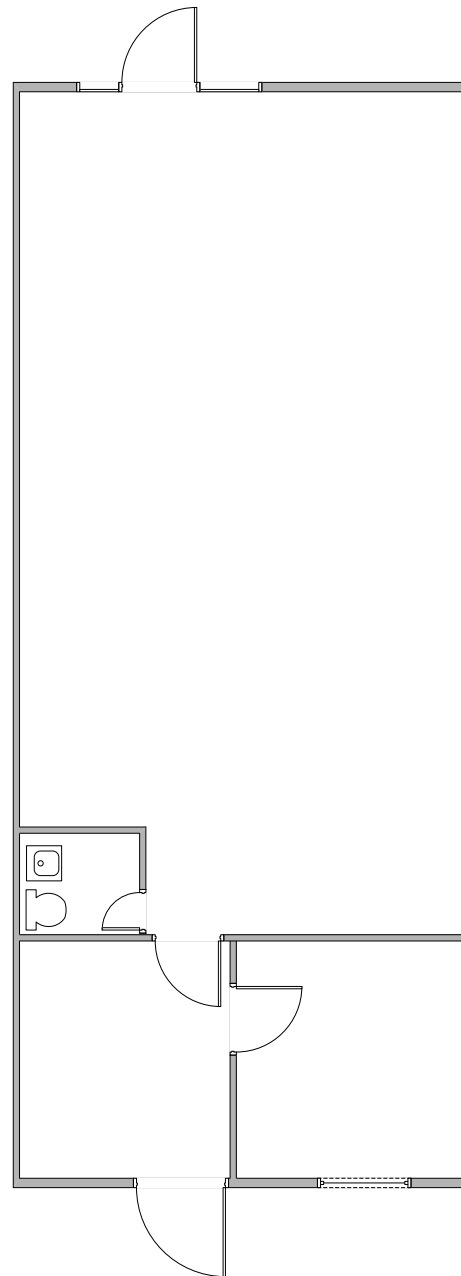
1725 Monrovia Avenue, Unit C1, Costa Mesa, CA

1,400 Sq. Ft.

For further information, please contact:

David Kling
BRE# 01965659
david@tricoREALTY.com
714-751-4420

Visit us at
www.tricoREALTY.com



Not to Scale

3100-A Pullman St.
Costa Mesa, CA 92626

O: 714.751.4420
F: 714.540.4579

TricoRealty.com

BROKERAGE
DEVELOPMENT
MANAGEMENT