



# Floor Plan

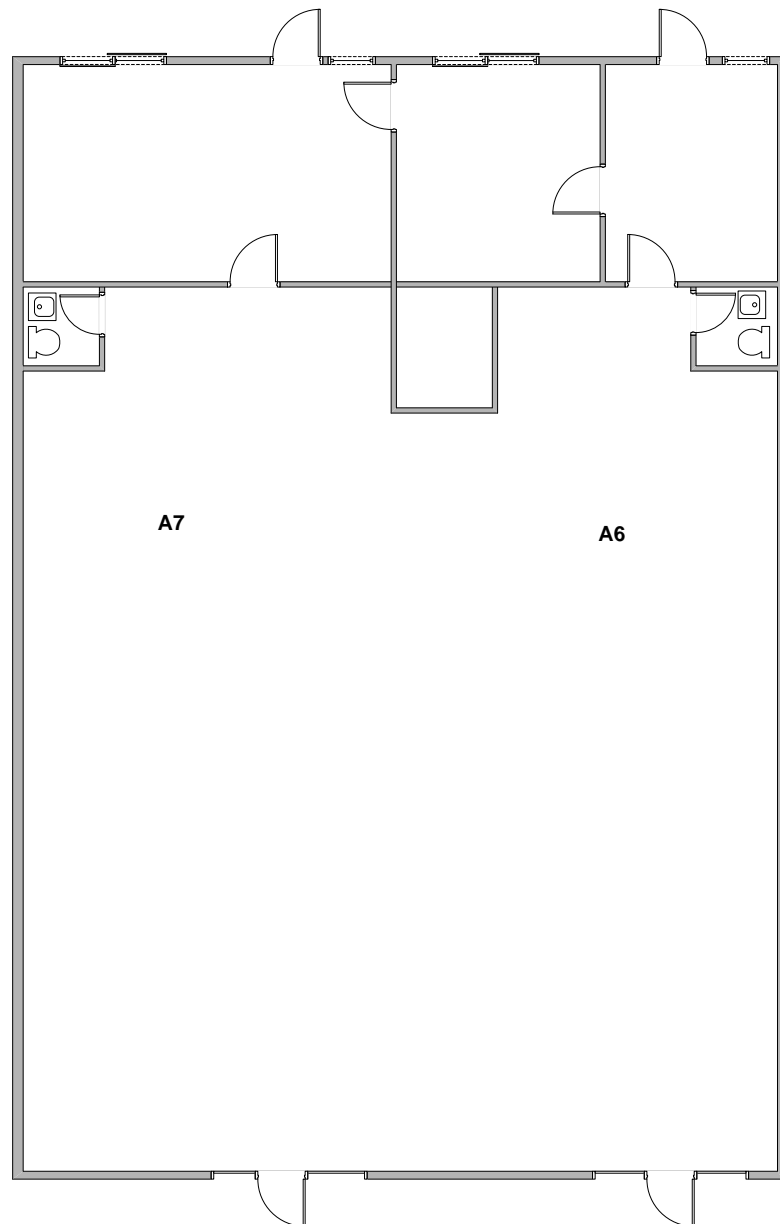
1725 Monrovia Avenue, Unit A6 & A7, Costa Mesa, CA

3,400 Sq. Ft.

For further information, please contact:

David Kling  
BRE# 01965659  
david@tricoREALTY.com  
714-751-4420

Visit us at  
[www.tricoREALTY.com](http://www.tricoREALTY.com)



Not to Scale