



FOR LEASE

2,700 Square Foot Units

FEATURES:

OFFICE FEATURES:

- Store Front Entries
- Street Front Exposure
- Fluorescent Lighting
- Heated / Air-Conditioned

WAREHOUSE FEATURES:

- 3 Phase Power, Minimum 100 Amps 120/208 Volt
- Fluorescent Lighting
- Sky Lights
- 10' X 12' Truck Doors
- 16' Ft. Clearance
- Two Restrooms Per Unit

OTHER FEATURES:

- Ample Parking
- M-G Zone
- Outside Security Lighting

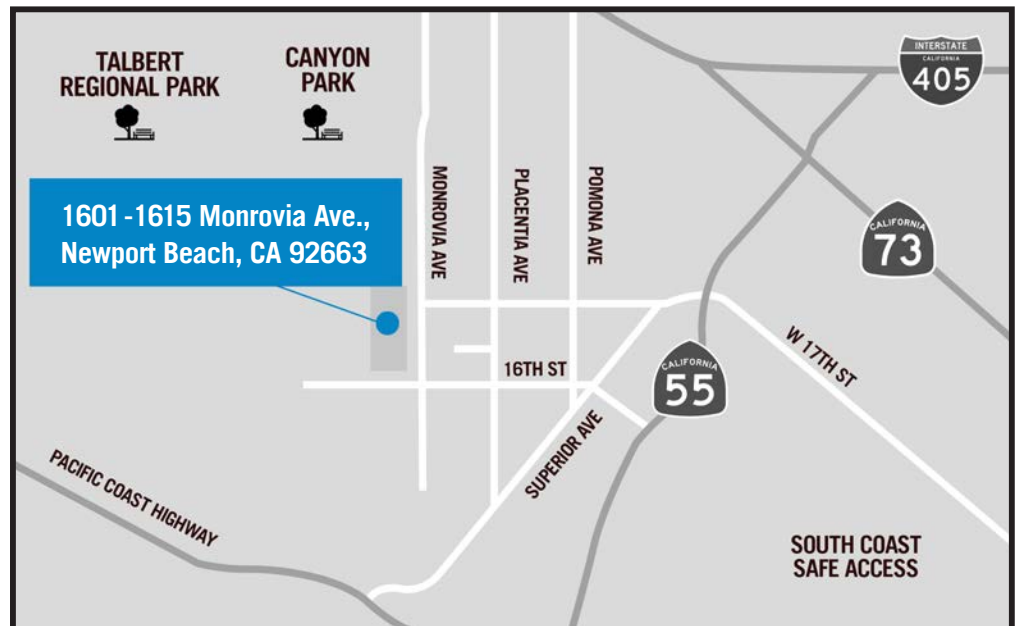


1601-1615 Monrovia Ave., Newport Beach, CA 92663

FOR FURTHER DETAILS:

DAVID KLING

david@tricoREALTY.com
License #01965659



This information has been furnished from sources which we deem reliable; however, we do not guarantee its accuracy and assume no liability. Do not rely on any of the information contained herein without verifying it yourself directly with the listing broker or owner.

Trico Realty, Inc.

3100-A Pullman Street
Costa Mesa, CA 92626
(714) 751-4420 • License #00342120

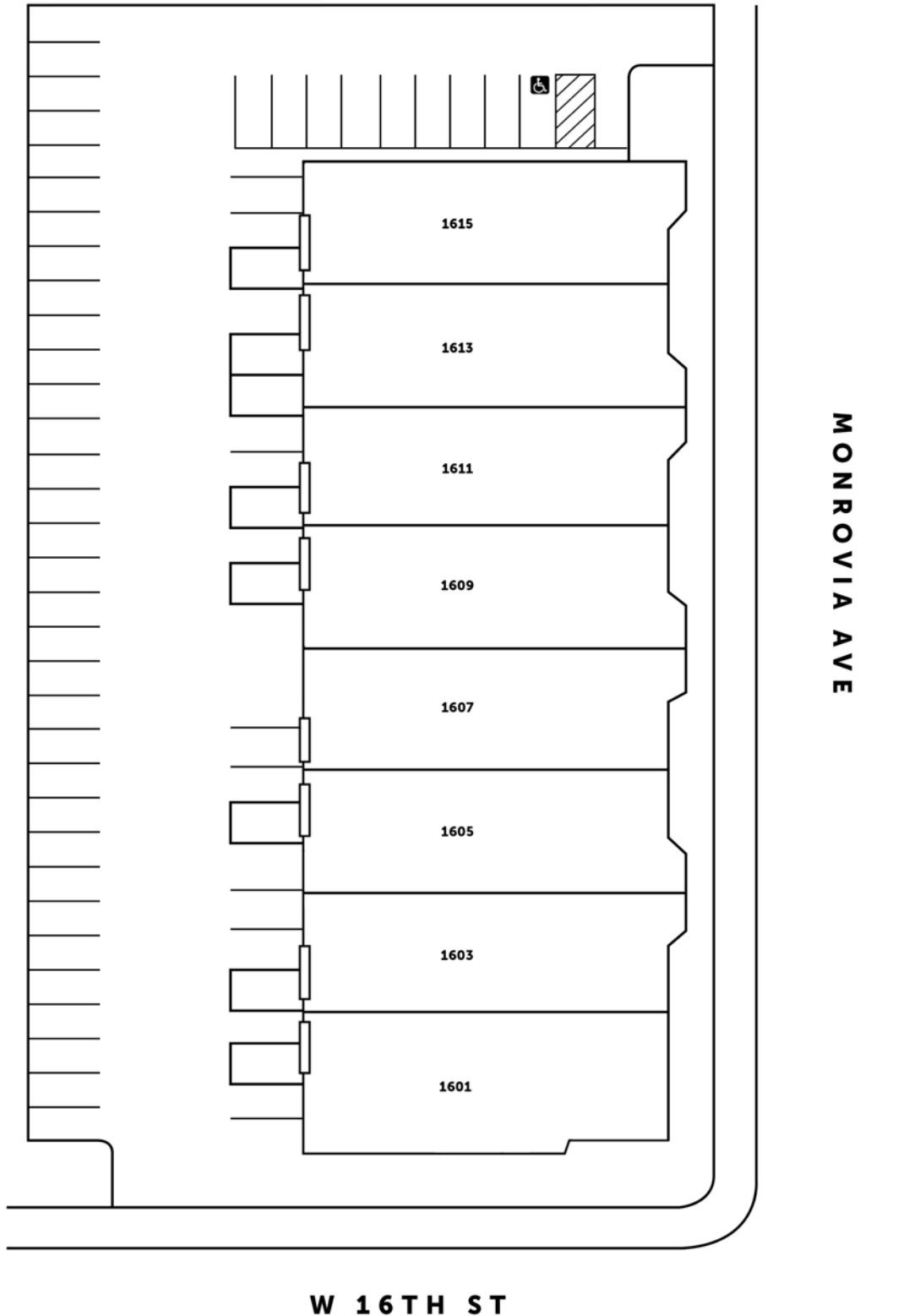
For additional information
Visit our Website at www.TricoRealty.com



1601-1615 Monrovia Ave,
Newport Beach, CA 92663

FOR LEASE

2,700 Square Foot Units



Trico Realty, Inc.

3100-A Pullman Street
Costa Mesa, CA 92626

(714) 751-4420 • License #00342120

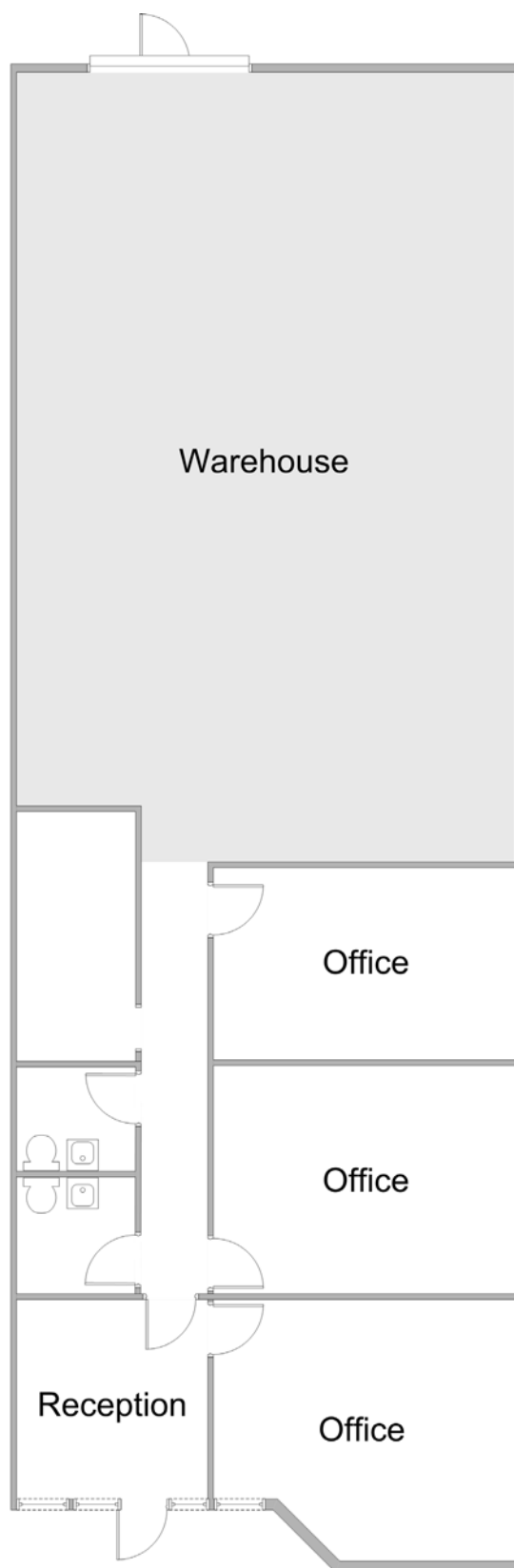
For additional information
Visit our Website at www.TricoRealty.com



1601-1615 Monrovia Ave,
Newport Beach, CA 92663

FOR LEASE

2,700 Square Foot Units



Trico Realty, Inc.

3100-A Pullman Street
Costa Mesa, CA 92626

(714) 751-4420 • License #00342120

For additional information
Visit our Website at www.TricoRealty.com

