



**FOR LEASE**

**5,036 Square Feet**

**FEATURES:**

**OFFICE FEATURES:**

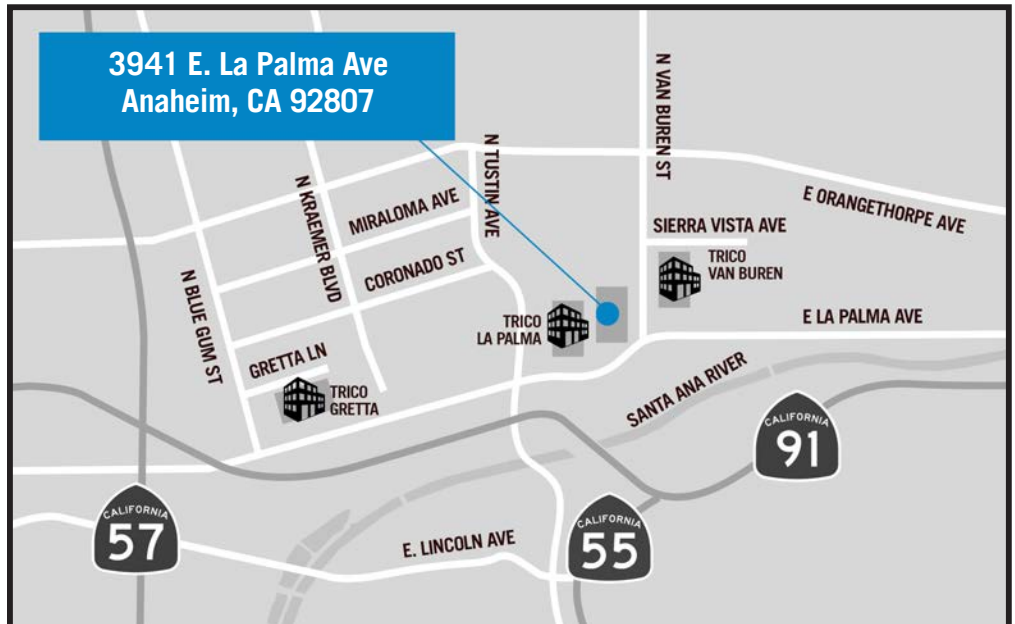
- La Palma Street Frontage
- Sublease with Direct Lease Preferred
- Upgraded VCT Flooring in Reception
- New HVAC in Office Areas
- Coffee Bar

**OTHER FEATURES:**

- Exterior Security Lighting
- Energy Saving Lighting
- Close to 5, 55, 57, 91 Freeways



**3941 E. La Palma Avenue  
Anaheim, CA 92807**



This information has been furnished from sources which we deem reliable; however, we do not guarantee its accuracy and assume no liability. Do not rely on any of the information contained herein without verifying it yourself directly with the listing broker or owner.

**FOR FURTHER  
DETAILS:**

**REN GLANZ**

ren@tricoREALTY.com  
License #01192242

**JOHN PAK**

john@tricoREALTY.com  
License #01483069

**Trico Realty, Inc.**

3100-A Pullman Street  
Costa Mesa, CA 92626  
(714) 751-4420 • License #00342120

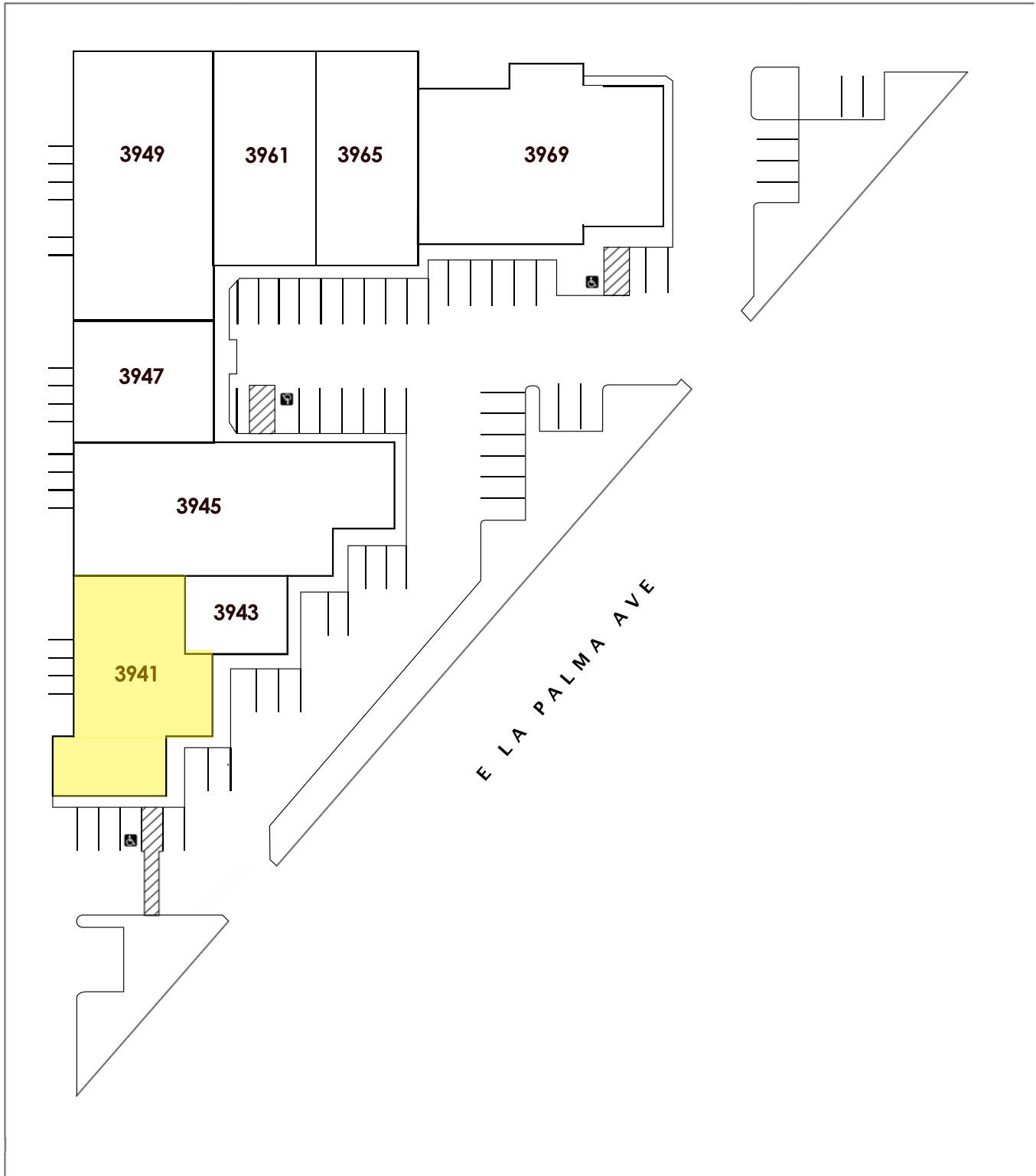
For additional information  
Visit our Website at [www.TricoRealty.com](http://www.TricoRealty.com)



3941 E. La Palma Ave  
Anaheim, CA 92807

FOR LEASE

5,036 Square Feet



Trico Realty, Inc.

3100-A Pullman Street  
Costa Mesa, CA 92626

(714) 751-4420 • License #00342120

For additional information

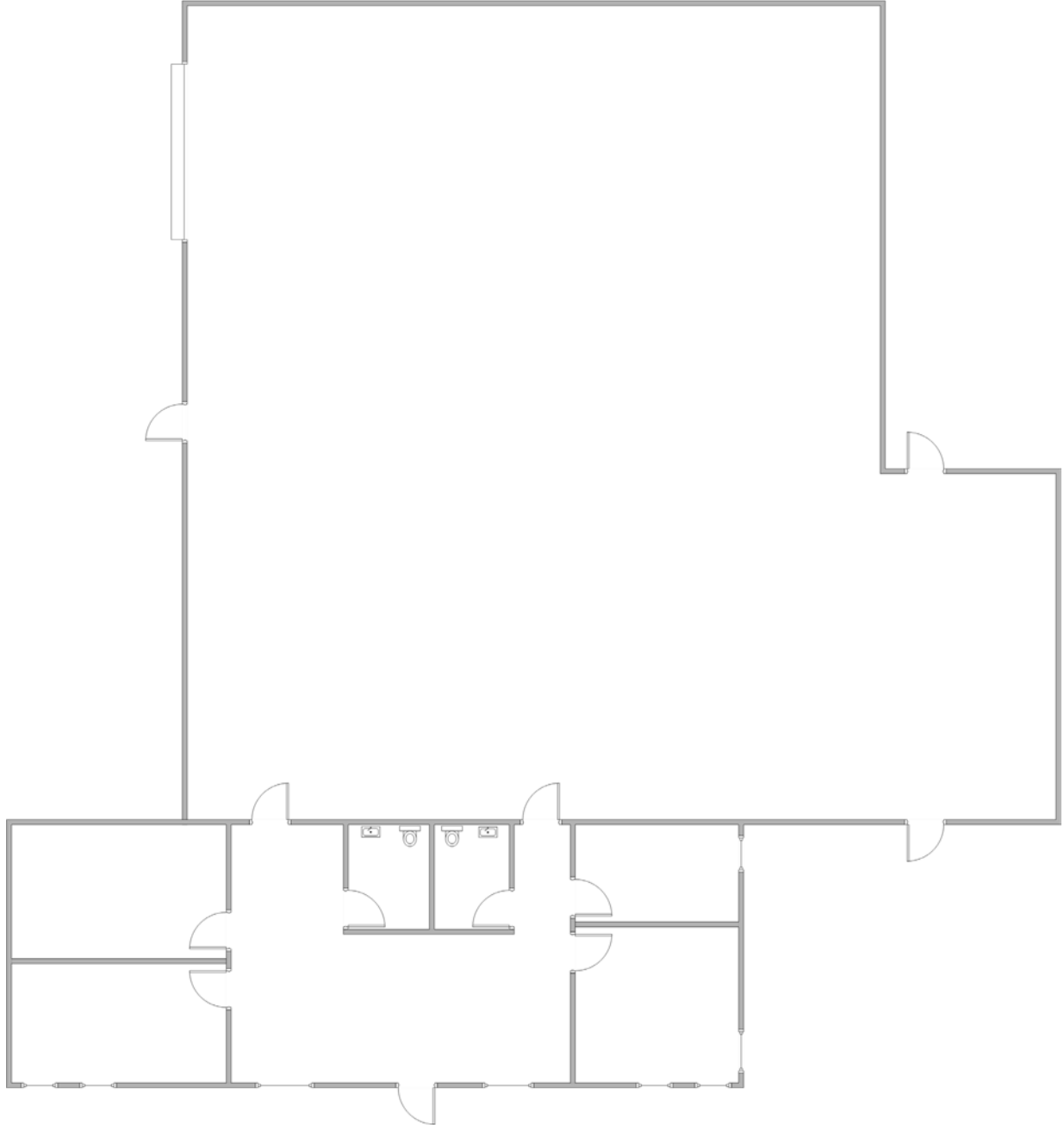
Visit our Website at [www.TricoRealty.com](http://www.TricoRealty.com)



3943 E. La Palma Ave  
Anaheim, CA 92807

**FOR LEASE**

**5,036 Square Feet**



**Trico Realty, Inc.**

3100-A Pullman Street  
Costa Mesa, CA 92626

(714) 751-4420 • License #00342120

For additional information  
Visit our Website at [www.TricoRealty.com](http://www.TricoRealty.com)

