



FOR LEASE

• 1,000 - 4,000 Square Foot Units

FEATURES:

- HVAC in Offices
- 100% Office Available
- Minimum Clear Height 14' to 16'
- Ground Level Doors
- Exterior Security Lighting
- 100 Amps, 120/208 Volt, 3 Phase
- Secured Trash Enclosures
- Street Frontage Units



**13600 -13640 Imperial Highway
Santa Fe Springs, CA 90670**



This information has been furnished from sources which we deem reliable; however, we do not guarantee its accuracy and assume no liability. Do not rely on any of the information contained herein without verifying it yourself directly with the listing broker or owner.

**FOR FURTHER
DETAILS:**

ERIN GARNER

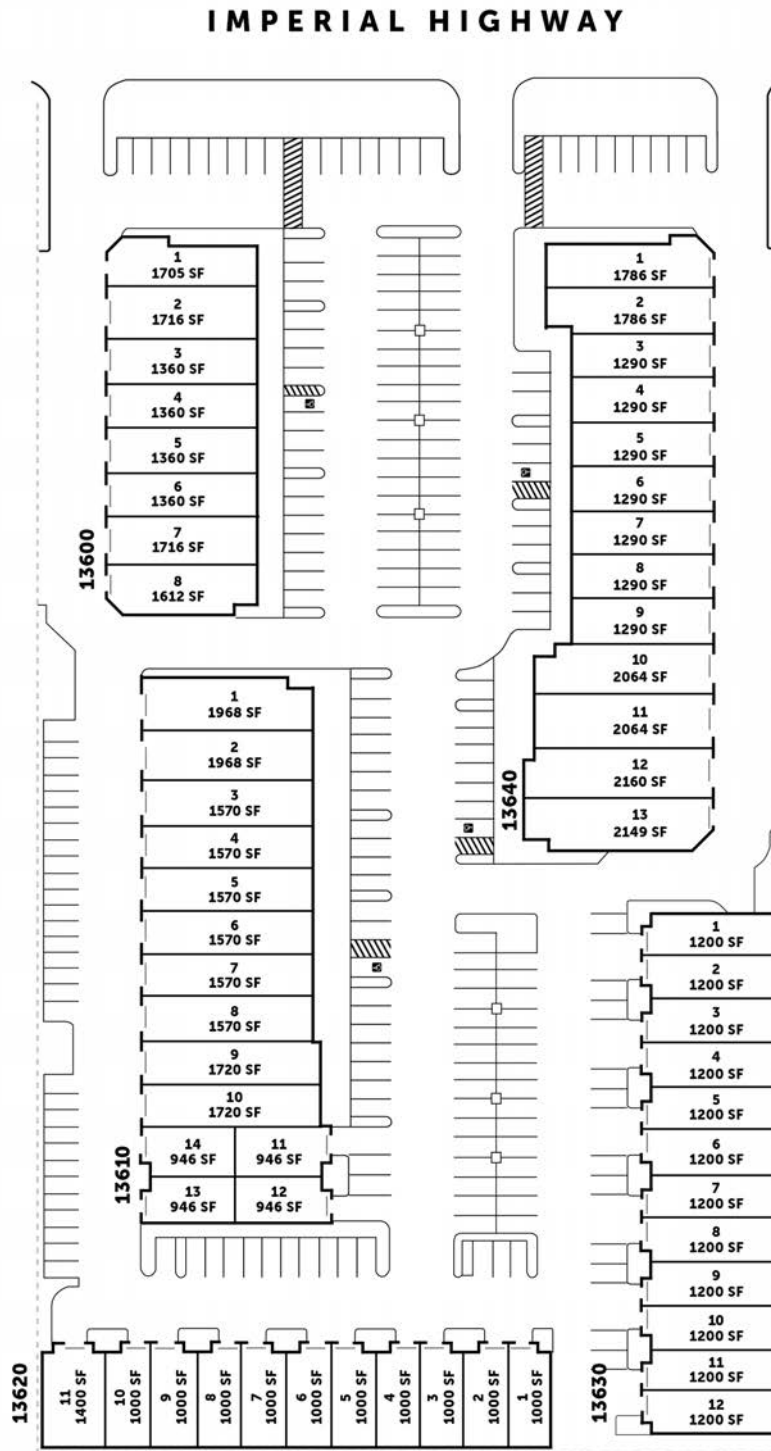
erin@tricoREALTY.com
License #02228139

Trico Realty, Inc.

3100-A Pullman Street
Costa Mesa, CA 92626
(714) 751-4420 • License #00342120

For additional information
Visit our Website at www.TricoRealty.com

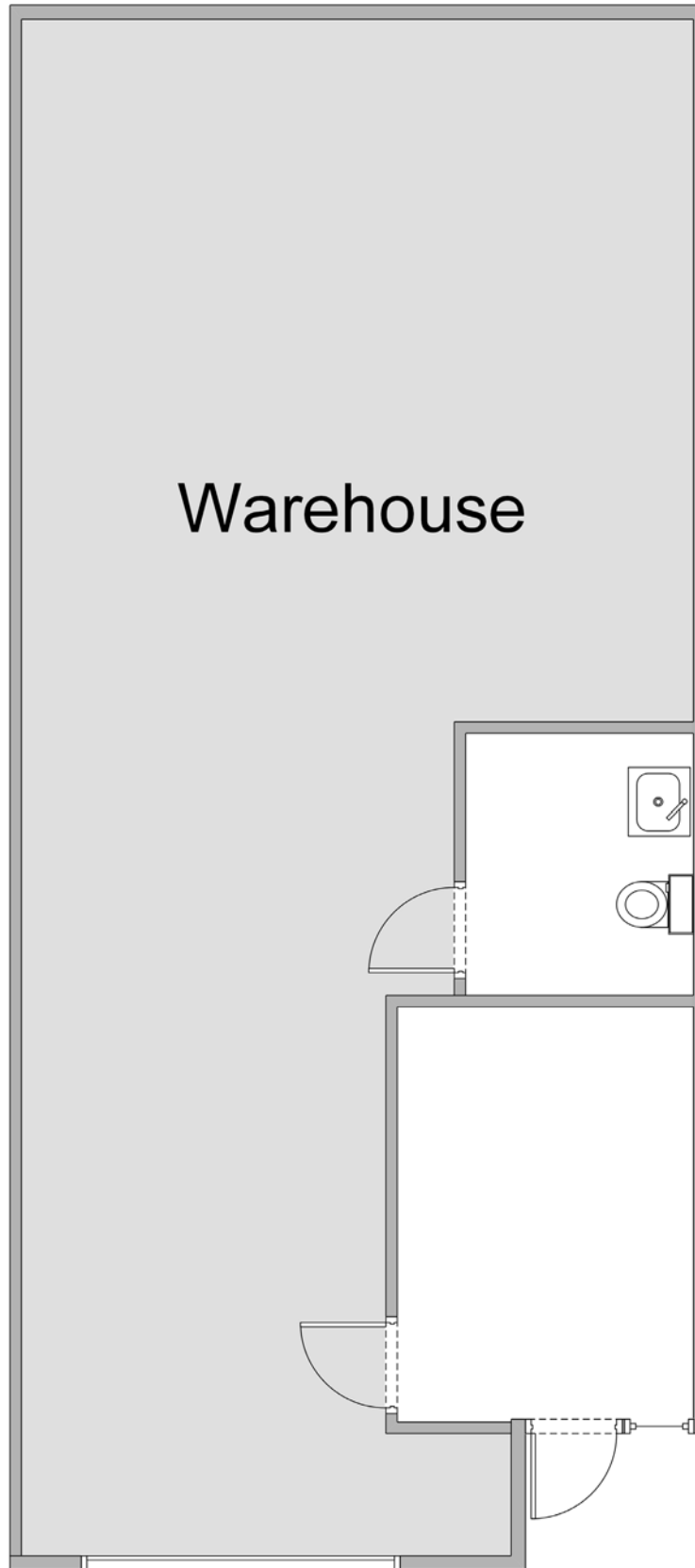




13600 - 13640 Imperial Highway
Santa Fe Springs, CA 90670

FOR LEASE

• 1,000 - 4,000 Square Foot Units



Trico Realty, Inc.

3100-A Pullman Street
Costa Mesa, CA 92626

(714) 751-4420 • License #00342120

For additional information
Visit our Website at www.TricoRealty.com

