



FOR LEASE

• 1,100-2,304 Square Foot Units

FEATURES:

- Airport, 405, 55, & 73 Freeway Close
- Private Front Office
- Renovated Office
- Time Warner Business Class Cable
- Restroom

WAREHOUSE FEATURES:

- 12' X 12' Rear Overhead Doors
- 40-100 Amps / Single & 3 Phase Power
- 14' Clearance
- Exterior Security Lighting
- Fire Sprinklers
(Buildings 2931, 2940 & 2941)



2930-2941 Grace Lane, Costa Mesa, CA 92626



This information has been furnished from sources which we deem reliable; however, we do not guarantee its accuracy and assume no liability. Do not rely on any of the information contained herein without verifying it yourself directly with the listing broker or owner.

FOR FURTHER DETAILS:

DAVID KLING

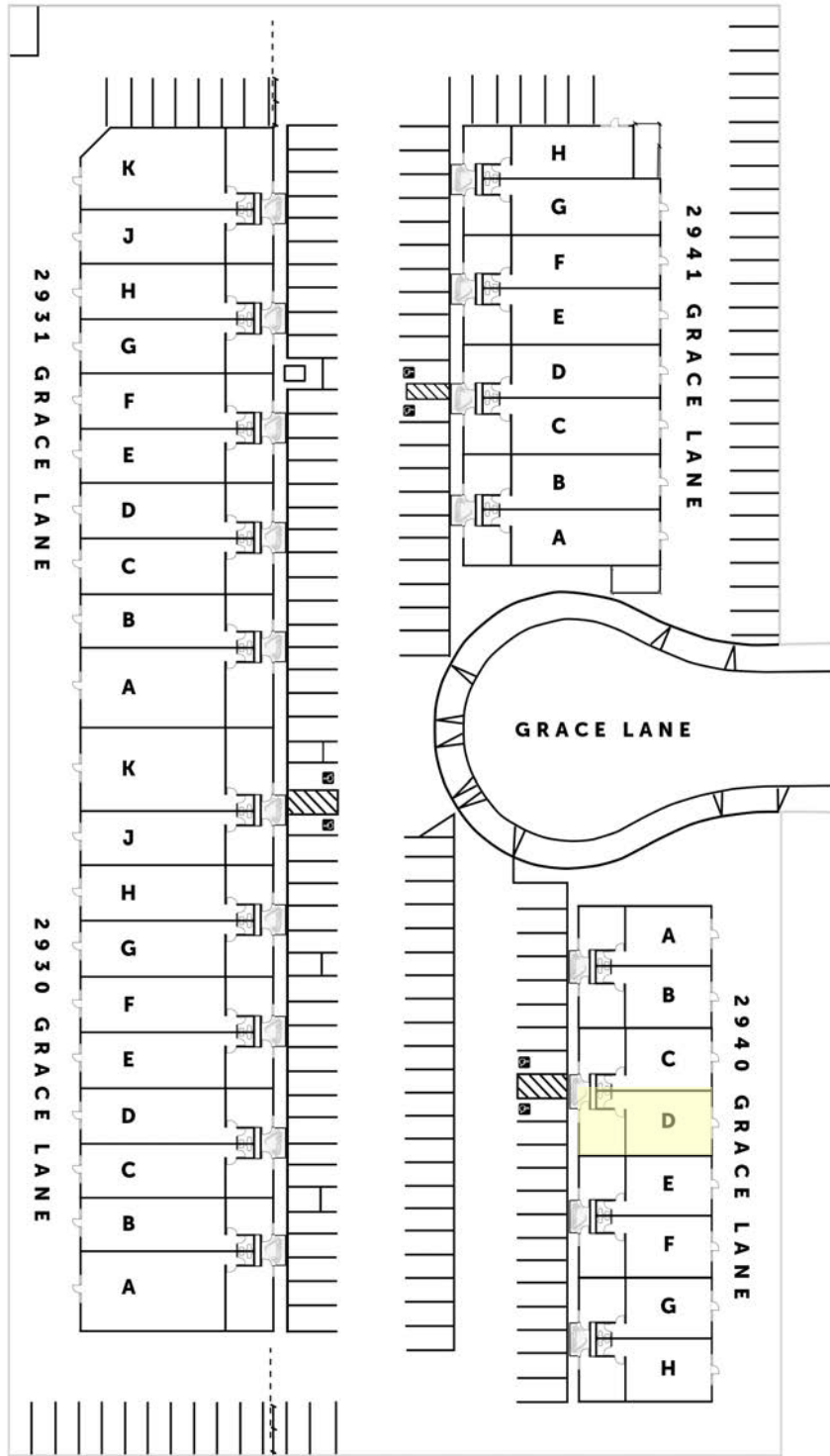
david@tricoREALTY.com
License #01965659

Trico Realty, Inc.

3100-A Pullman Street
Costa Mesa, CA 92626
(714) 751-4420 • License #00342120

For additional information
Visit our Website at www.TricoRealty.com







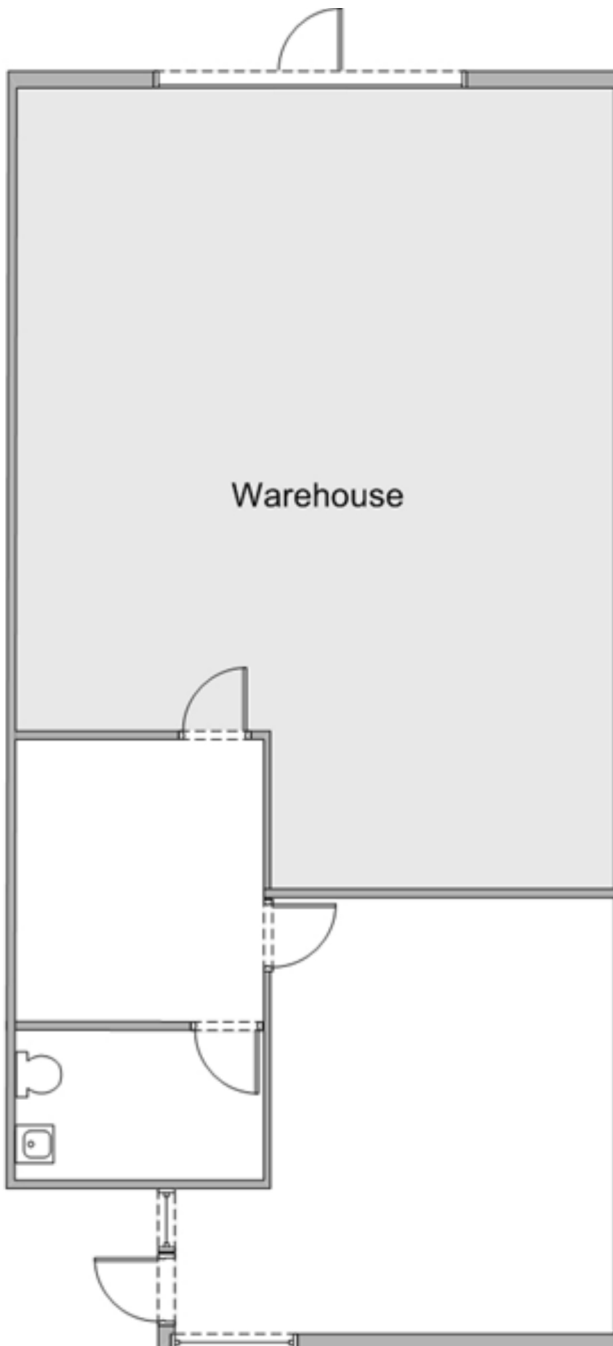
2940 Grace Lane, Unit D, Costa Mesa, CA, 92626
1,200 Sq. Ft.

**For Further Information,
please contact:**

David Kling
DRE#01965659
david@tricoREALTY.com
714-751-4420

Visit us at
www.tricoREALTY.com

Not to Scale



3100-A Pullman St.
Costa Mesa, CA 92626

O: 714.751.4420
F: 714.540.4579

TricoRealty.com

**BROKERAGE
DEVELOPMENT
MANAGEMENT**