



FOR LEASE

**2,900 Square Foot Industrial Unit
Corner Unit**

FEATURES:

OFFICE FEATURES:

- Air Conditioned/Heated
- 1 Private Office
- 1 Large Conference Room

WAREHOUSE FEATURES:

- 200 Amps, 120/240V, 3 Phase
- 10' x 12' Overhead Door
- 14' Clearance
- Skylights

OTHER FEATURES:

- Two Restrooms
- Exterior Lighting
- Adjacent to the New Tustin Legacy Development
- Conveniently located near the 55, 405 and 5 freeways



1803 Carnegie Ave, Santa Ana, CA 92705

**FOR FURTHER
DETAILS:**

DAVID KLING

davod@tricoirealty.com
BRE #0165659

PARKER ROBERTS

parker@tricoirealty.com
BRE #01994597



This information has been furnished from sources which we deem reliable; however, we do not guarantee its accuracy and assume no liability. Do not rely on any of the information contained herein without verifying it yourself directly with the listing broker or owner.

Trico Realty, Inc.

3100-A Pullman Street
Costa Mesa, CA 92626
(714) 751-4420 • License #00342120

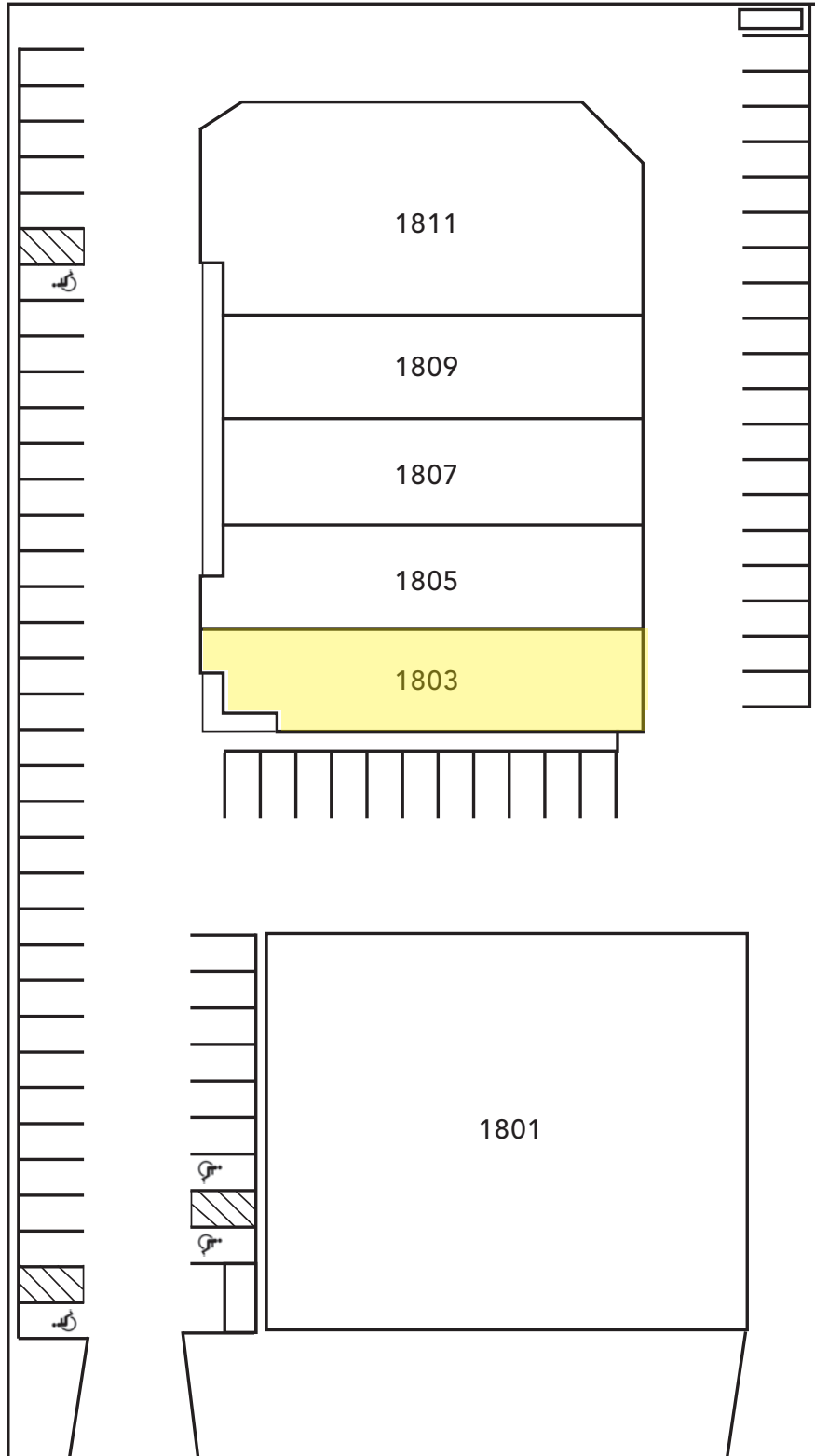
For additional information
Visit our Website at www.TricoRealty.com



1803 Carnegie Ave
Santa Ana, CA 92705

FOR LEASE

**2,900 Square Foot Industrial Unit
Corner Unit**



Carnegie Avenue

Trico Realty, Inc.

3100-A Pullman Street
Costa Mesa, CA 92626

(714) 751-4420 • License #00342120

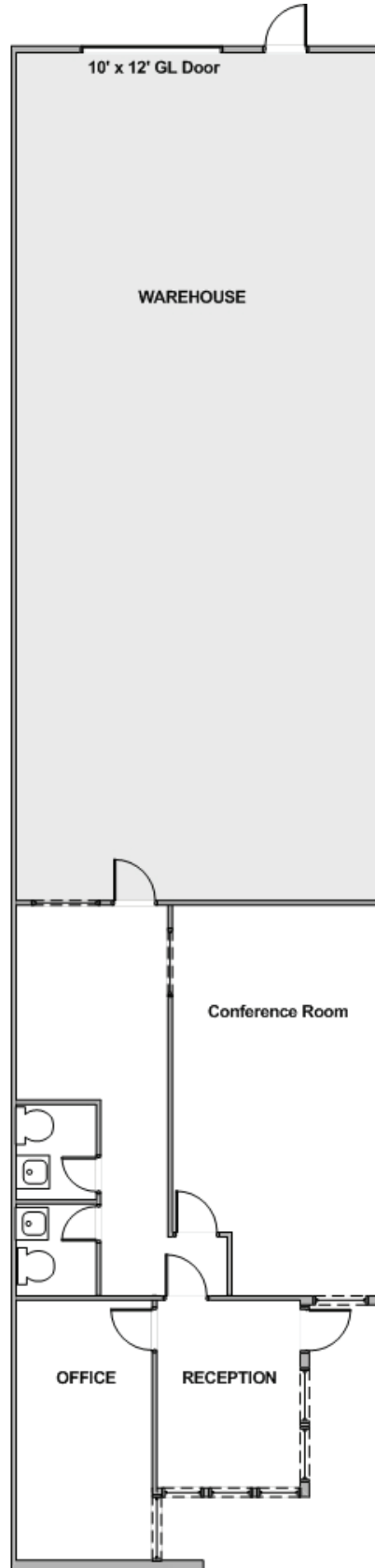
For additional information
Visit our Website at www.TricoRealty.com



1803 Carnegie Ave
Santa Ana, CA 92705

FOR LEASE

**2,900 Square Foot Industrial Unit
Corner Unit**



Trico Realty, Inc.

3100-A Pullman Street
Costa Mesa, CA 92626

(714) 751-4420 • License #00342120

For additional information
Visit our Website at www.TricoRealty.com

