



INDUSTRIAL UNITS FOR LEASE

• 1,000-4,500 Square Foot Units

FEATURING

- Air Conditioned Offices
- LED Lighting
- 10'x10' Ground Level Doors
- 60-100 Amps, 208 Volt, 3 Phase
- Exterior Security LED Lighting
- Corner of Beach Blvd & Imperial Hwy
- Retail Units Available, Too



**1251-1401 South Beach Boulevard
La Habra, CA 90631**

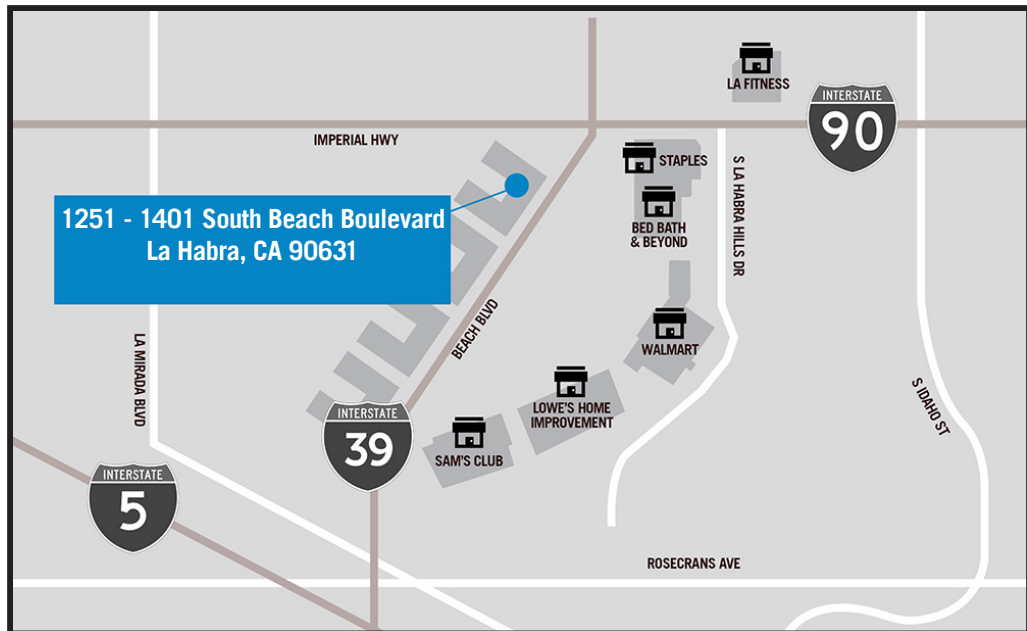
FOR FURTHER DETAILS:

JOHN PAK

john@tricoREALTY.com
License #01483069

PARKER ROBERTS

parker@tricoREALTY.com
License #01994597



This information has been furnished from sources which we deem reliable; however, we do not guarantee its accuracy and assume no liability. Do not rely on any of the information contained herein without verifying it yourself directly with the listing broker or owner.

Trico Realty, Inc.

3100-A Pullman Street
Costa Mesa, CA 92626
(714) 751-4420 • License #00342120

For additional information
Visit our Website at www.TricoRealty.com

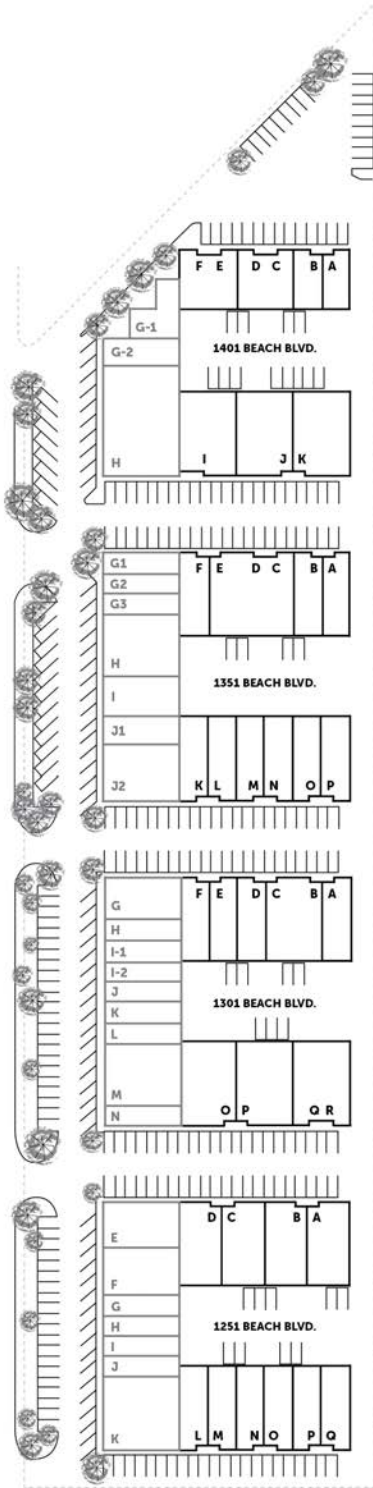


1251-1401 South Beach Blvd.
La Habra, CA 90631

INDUSTRIAL UNITS FOR LEASE

• 1,000-4,500 Square Foot Units

BEACH BOULEVARD



1401 BEACH BOULEVARD

UNIT	SQ FT
A	1,005 SF
B	1,005 SF
C/D	2,010 SF
E/F	2,010 SF
I	3,577 SF
J	2,700 SF
K	2,701 SF

1301 BEACH BOULEVARD

UNIT	SQ FT
A	1,497 SF
B/C	2,994 SF
D	1,497 SF
E	1,497 SF
F	1,497 SF
O	2,238 SF
P	2,240 SF
Q/R	4,501 SF

1351 BEACH BOULEVARD

UNIT	SQ FT
A	1,497 SF
B	1,497 SF
C/D/E	4,491 SF
F	1,497 SF
K	1,497 SF
L	1,497 SF
M/N	2,994 SF
O/P	2,994 SF

1251 BEACH BOULEVARD

UNIT	SQ FT
A	2,244 SF
B	2,244 SF
C	2,244 SF
D	2,244 SF
L	1,005 SF
M	1,005 SF
N	1,005 SF
O	1,005 SF
P	1,005 SF
Q	1,005 SF

Trico Realty, Inc.

3100-A Pullman Street
Costa Mesa, CA 92626

(714) 751-4420 • License #00342120

For additional information

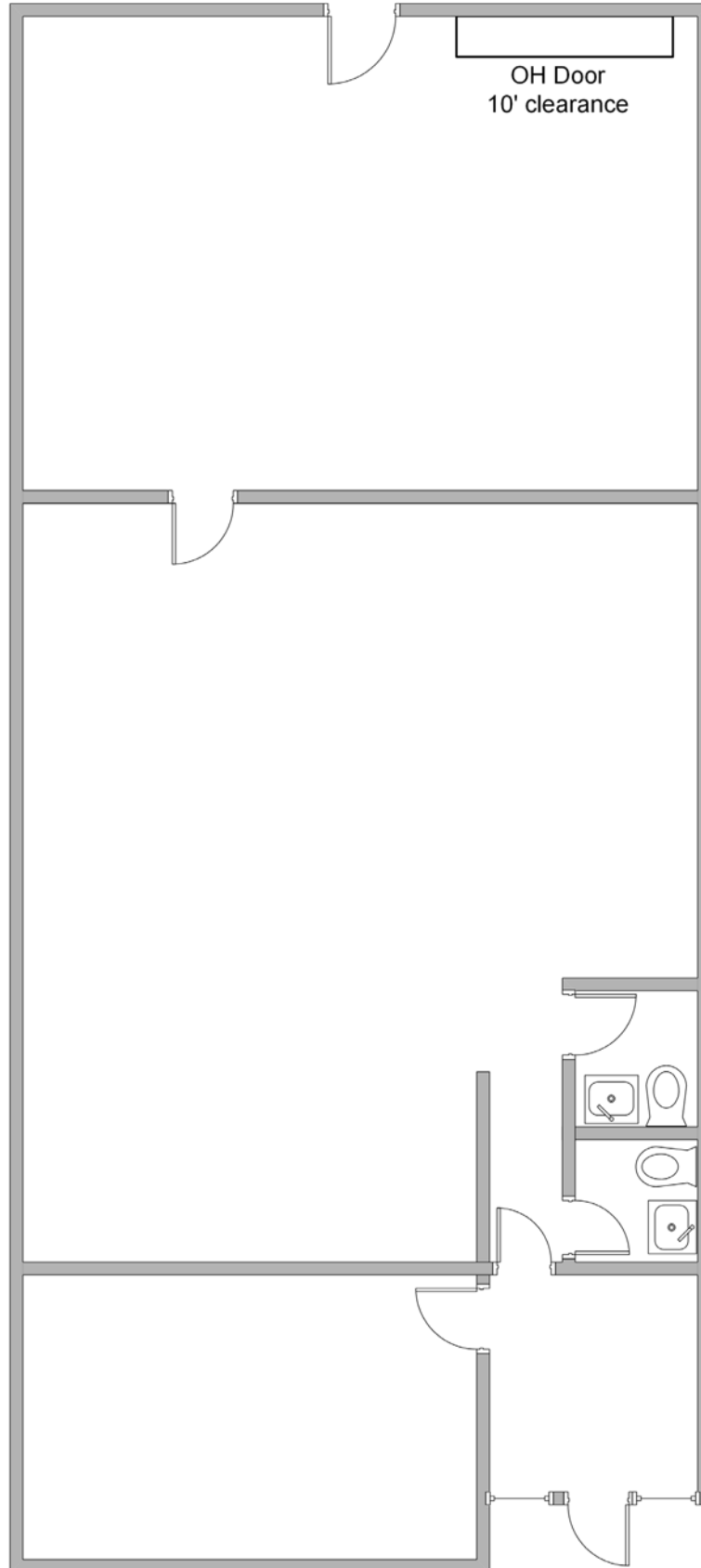
Visit our Website at www.TricoRealty.com



1251-1401 South Beach Blvd.
La Habra, CA 90631

INDUSTRIAL UNITS FOR LEASE

• 1,000-4,500 Square Foot Units



Trico Realty, Inc.

3100-A Pullman Street
Costa Mesa, CA 92626

(714) 751-4420 • License #00342120

For additional information
Visit our Website at www.TricoRealty.com

