



780 S. Van Buren Street, Unit E, Placentia, CA, 92870
1,483 Sq. Ft.

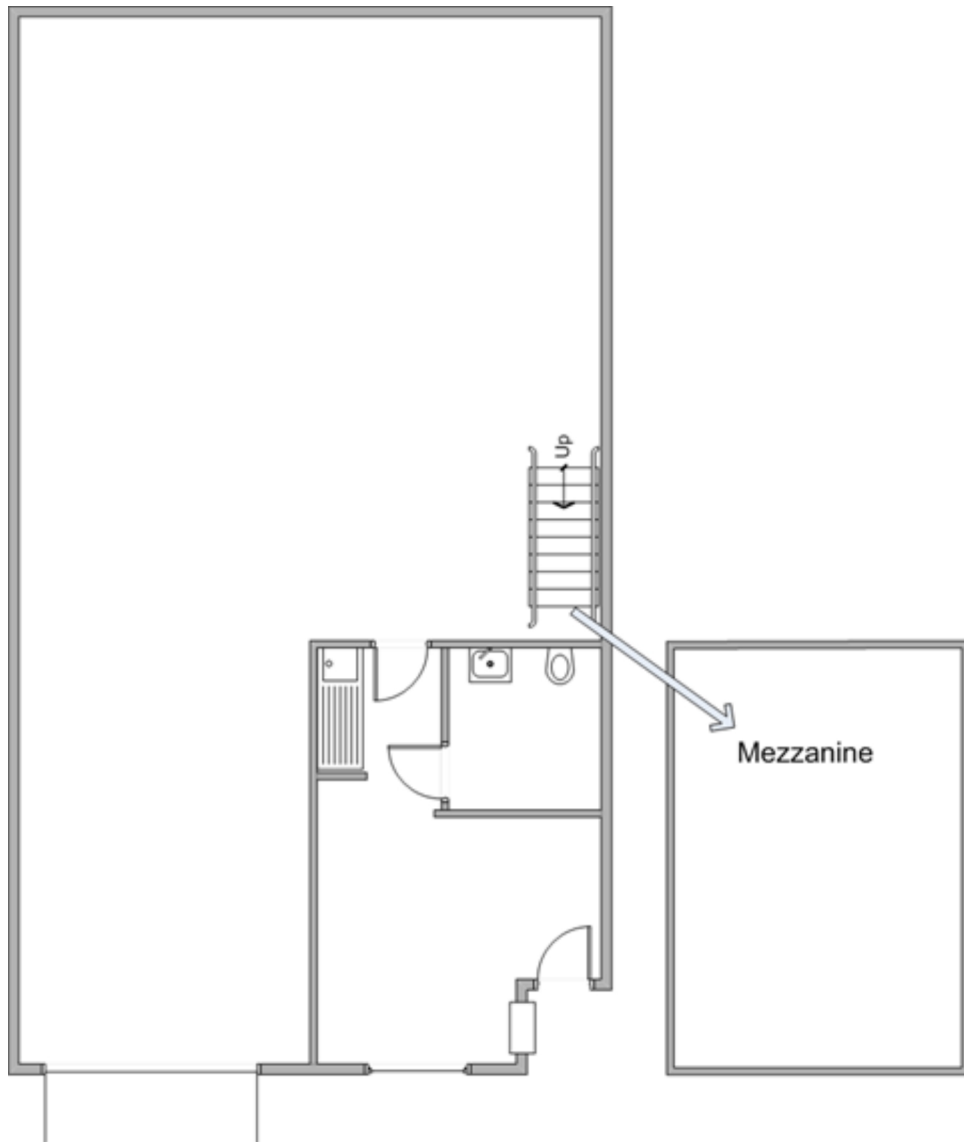
**For Further Information,
please contact:**

Ren Glanz
DRE#01192242
ren@tricoREALTY.com
714-751-4420

John Pak
DRE#01483069
john@tricoREALTY.com
714-751-4420

Visit us at
www.tricoREALTY.com

Note to Scale



3100-A Pullman St.
Costa Mesa, CA 92626

O: 714.751.4420
F: 714.540.4579

TricoRealty.com

**BROKERAGE
DEVELOPMENT
MANAGEMENT**