



22775 Savi Ranch Parkway, Unit D, Yorba Linda, CA, 92887
4,800 Sq. Ft.

**For Further Information, please
contact:**

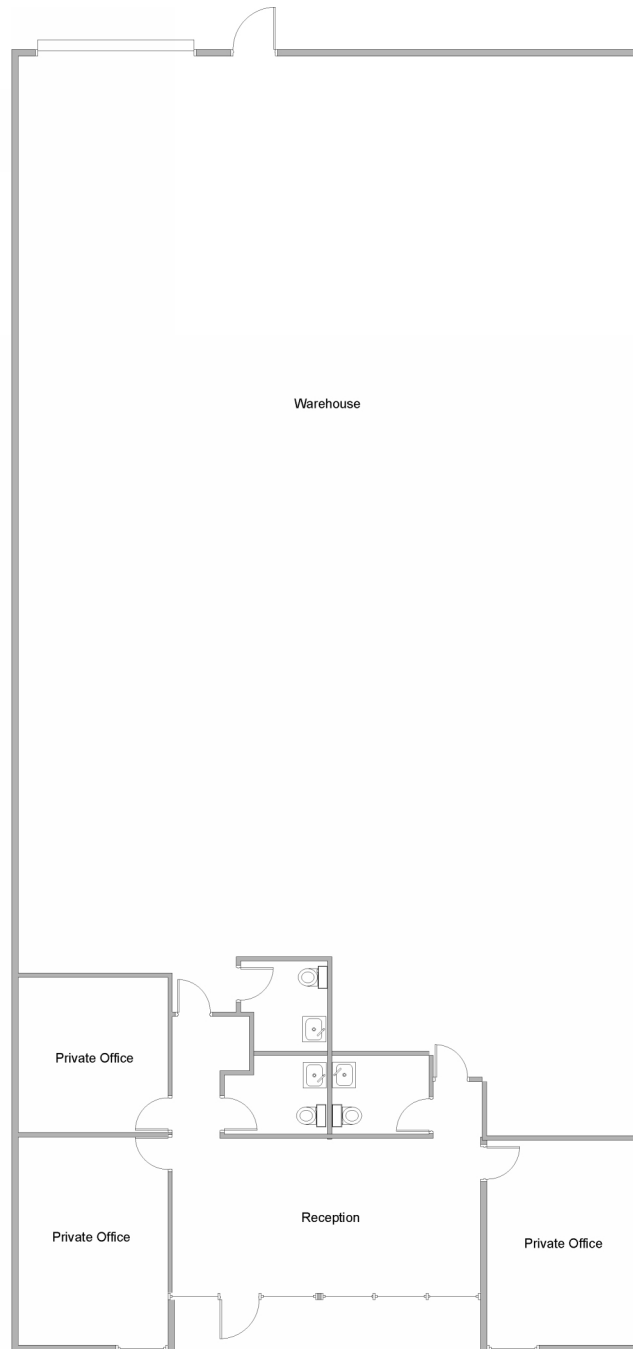
Mark Hintergardt
DRE#0096286
mhintergardt@lee-associates.com

Pat Delaney
DRE#00865136
pdelaney@lee-associates.com

Ren Glanz
DRE#01192242
ren@tricoREALTY.com
0096286/00865136

Visit us at
www.tricoREALTY.com

Not to Scale



3100-A Pullman St.
Costa Mesa, CA 92626

O: 714.751.4420
F: 714.540.4579

TricoRealty.com

**BROKERAGE
DEVELOPMENT
MANAGEMENT**