



**FOR LEASE**

**15,700 Square Foot Unit**

**OFFICE FEATURES:**

- 3,700 Square Feet
- Heated Air Conditioned

**WAREHOUSE FEATURES:**

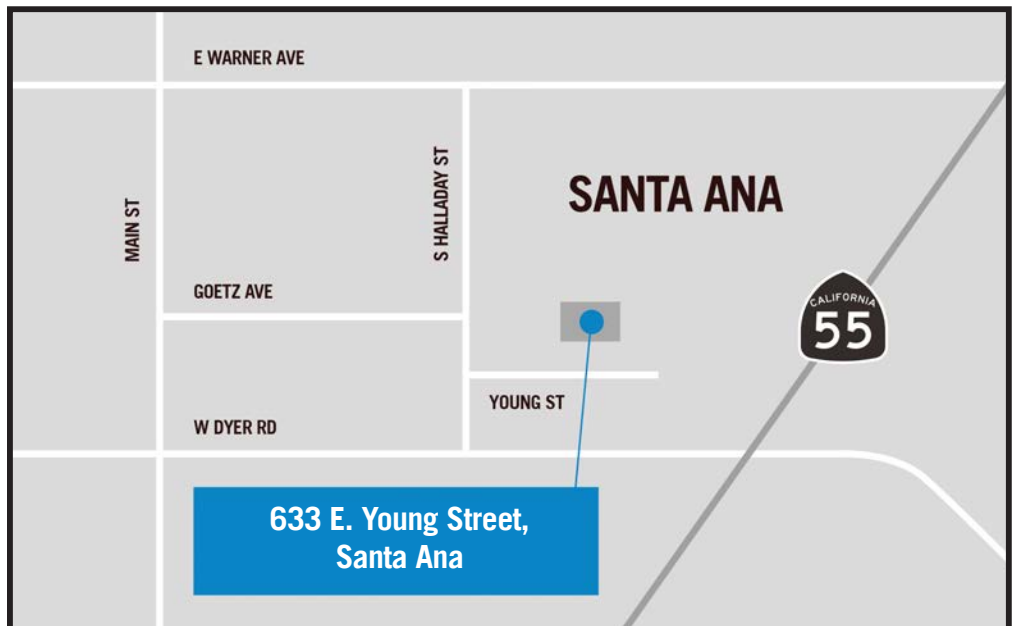
- 12,000 Square Feet
- 1,200 AMPs, 277/408 Volt, 3 Phase Power
- Two 12'x12' Ground Level Door
- 14' Clearance
- Upgraded Lighting

**OTHER FEATURES:**

- Fenced Yard  
Approx 23,000 Square Feet
- 63 Car Parking
- 4 Restrooms
- Exterior Security Lighting
- Excellent Freeway Access
- 5 Minutes to OC Airport



**633 East Young Street, Santa Ana**



This information has been furnished from sources which we deem reliable; however, we do not guarantee its accuracy and assume no liability. Do not rely on any of the information contained herein without verifying it yourself directly with the listing broker or owner.

**FOR FURTHER DETAILS:**

**DAVID KLING**

david@tricoREALTY.com  
BRE #01965659  
(714) 751-4420

**PARKER ROBERTS**

parker@tricoREALTY.com  
BRE #01994597  
(714) 751-4420

**Trico Realty, Inc.**

3100-A Pullman Street  
Costa Mesa, CA 92626  
(714) 751-4420 • License #00342120

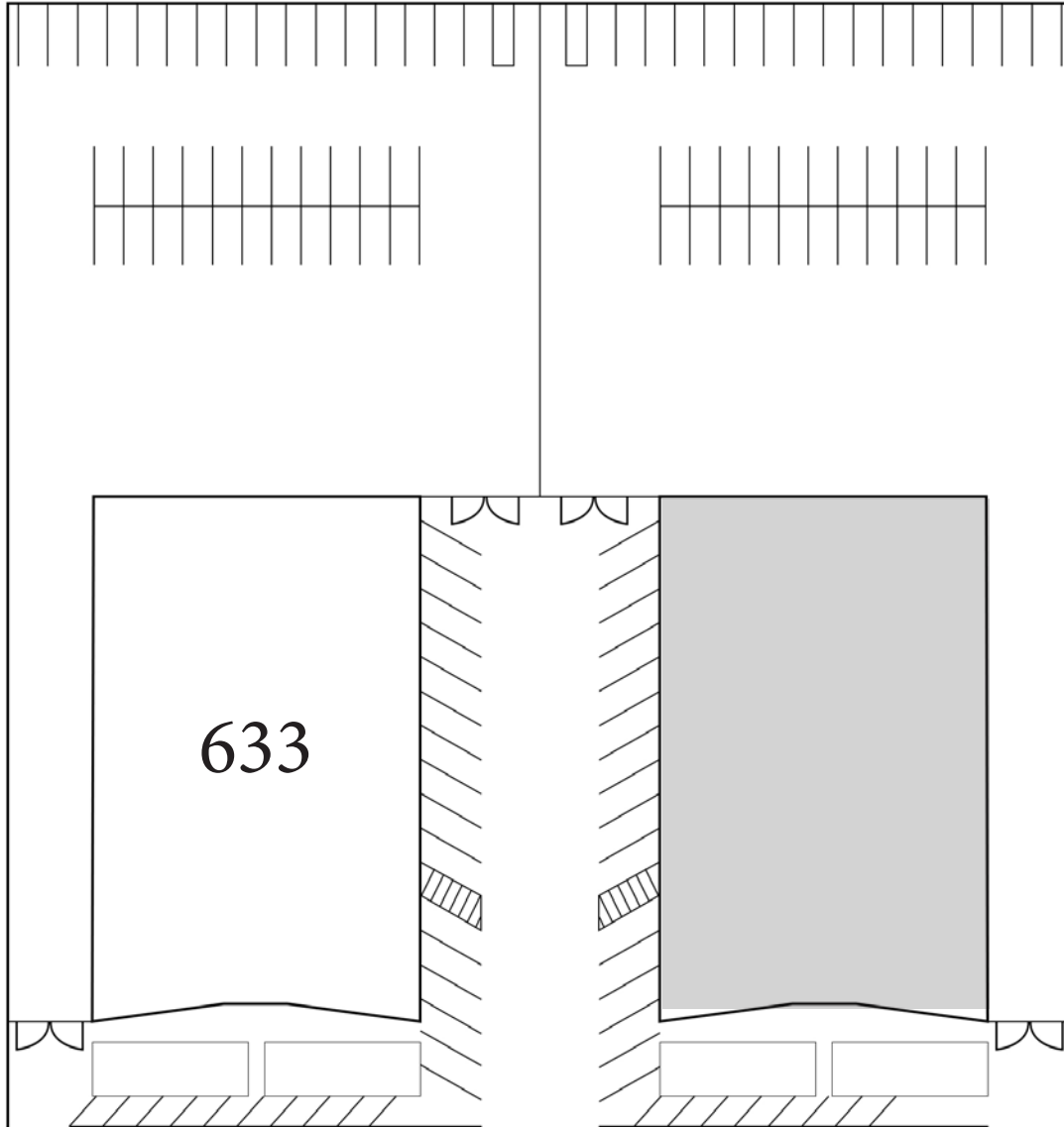
For additional information  
Visit our Website at [www.TricoRealty.com](http://www.TricoRealty.com)



633 E. Young Street  
Santa Ana, CA 92705

**FOR LEASE**

**15,000 Square Foot Unit**



**633 - 647 YOUNG STREET**

**Trico Realty, Inc.**

3100-A Pullman Street  
Costa Mesa, CA 92626

(714) 751-4420 • License #00342120

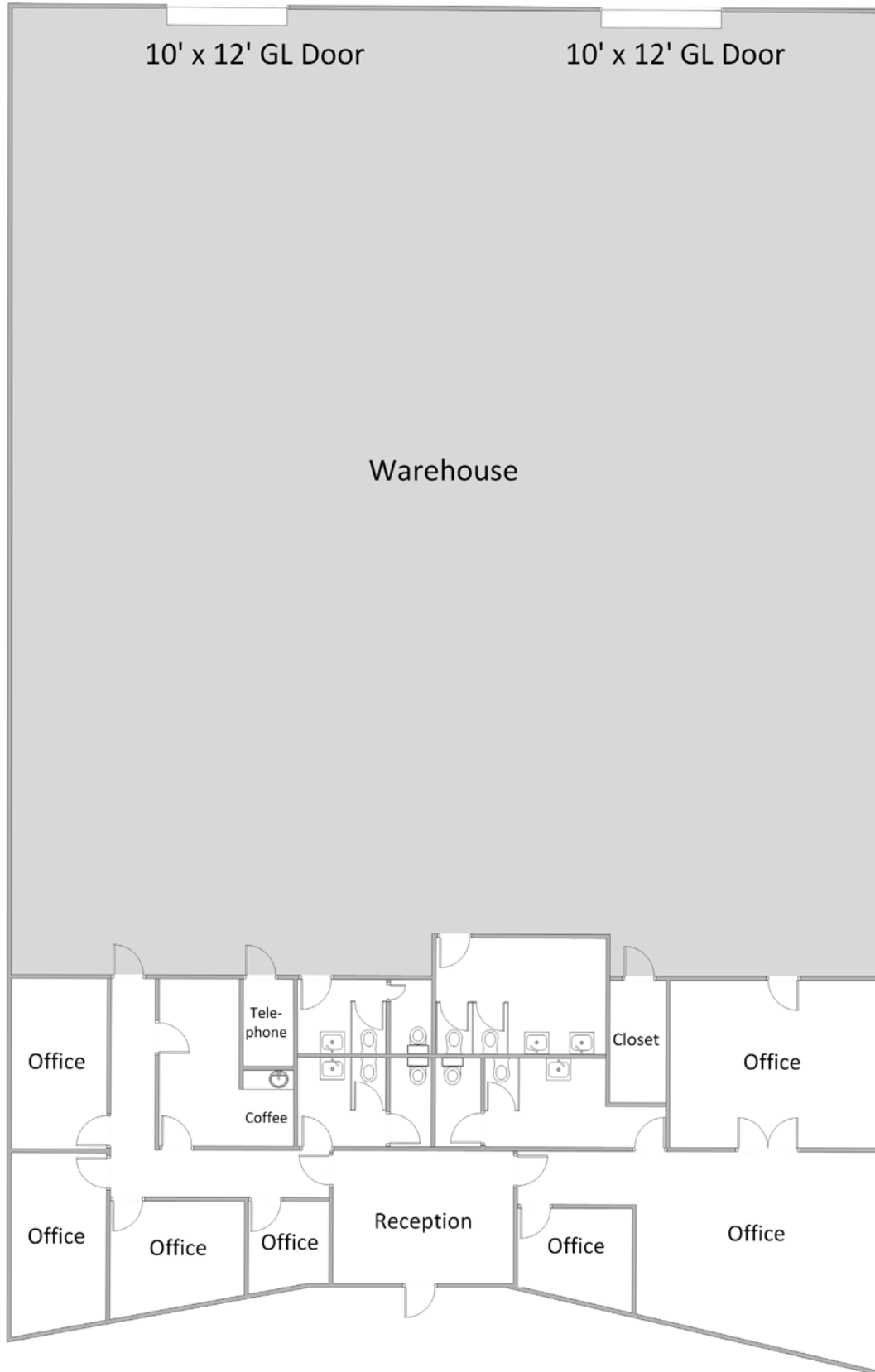
For additional information  
Visit our Website at [www.TricoRealty.com](http://www.TricoRealty.com)



633 E. Young Street  
Santa Ana, CA 92705

**FOR LEASE**

**15,000 Square Foot Unit**



**Trico Realty, Inc.**

3100-A Pullman Street  
Costa Mesa, CA 92626

(714) 751-4420 • License #00342120

For additional information  
Visit our Website at [www.TricoRealty.com](http://www.TricoRealty.com)

