



FOR LEASE

600 - 4,080 Square Foot Units

FEATURES:

- 24 Hour Access
- Office Space with HVAC
- 100 Amps, 120/208 Volts
- 3 Phase Power
- 10' X 10' Ground Level Doors
- 16' Clearance
- Excellent Access to 55, 57, & 91 Freeways
- Drive Around Building
- Street Frontage Units Available



**645-765 South State College Boulevard
Fullerton, CA 92831**



This information has been furnished from sources which we deem reliable; however, we do not guarantee its accuracy and assume no liability. Do not rely on any of the information contained herein without verifying it yourself directly with the listing broker or owner.

**FOR FURTHER
DETAILS:**

JOHN PAK
john@tricoREALTY.com
License #0483069

Trico Realty, Inc.
3100-A Pullman Street
Costa Mesa, CA 92626
(714) 751-4420 • License #00342120

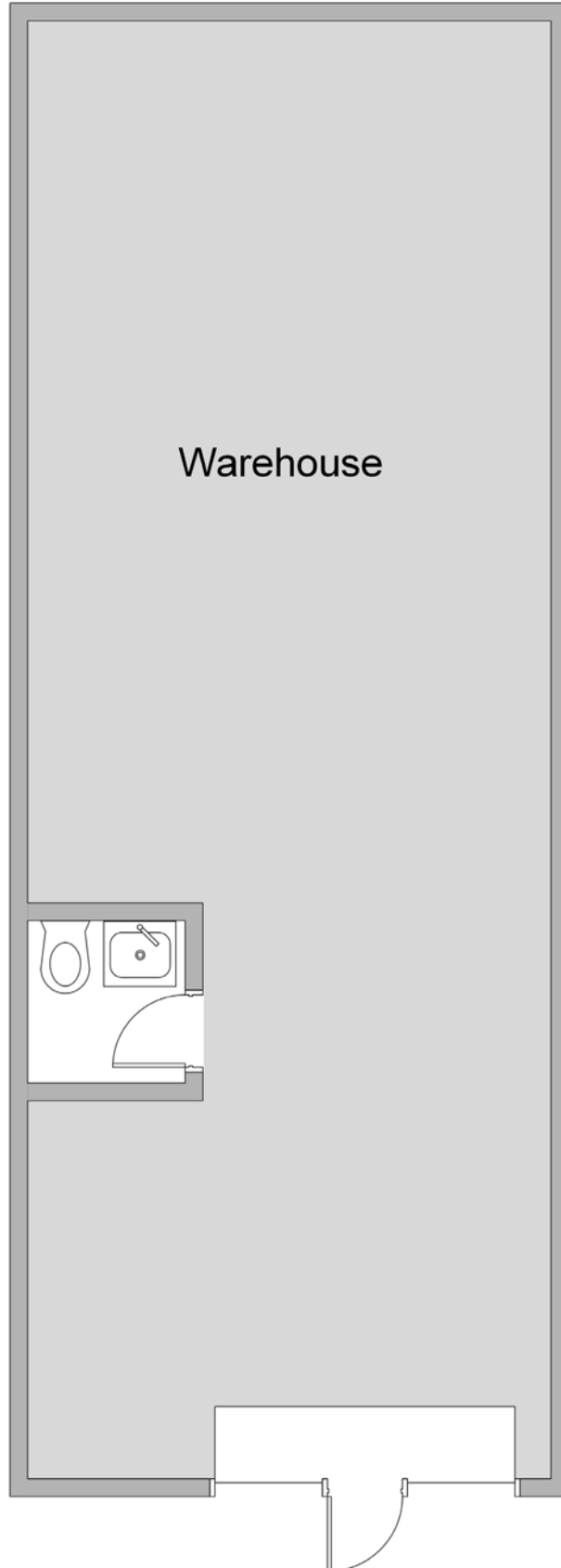
For additional information
Visit our Website at www.TricoRealty.com



645-765 South State College Boulevard
Fullerton CA 92831

FOR LEASE

600 - 4,080 Square Foot Units



Trico Realty, Inc.

3100-A Pullman Street
Costa Mesa, CA 92626

(714) 751-4420 • License #00342120

For additional information
Visit our Website at www.TricoRealty.com

