



**FOR LEASE**

• 850-12,680 Square Foot Office Units

## FEATURES:

### INDUSTRIAL FEATURES:

- Coffee Bar
- Two Restrooms
- Some Units with Exterior Truck Wells
- 10' x 12' and 12' x 14' Truck Doors
- 100 to 400 AMP Power (Expandable)
- Skylights and Fluorescent Lighting in Warehouse

### OFFICE FEATURES:

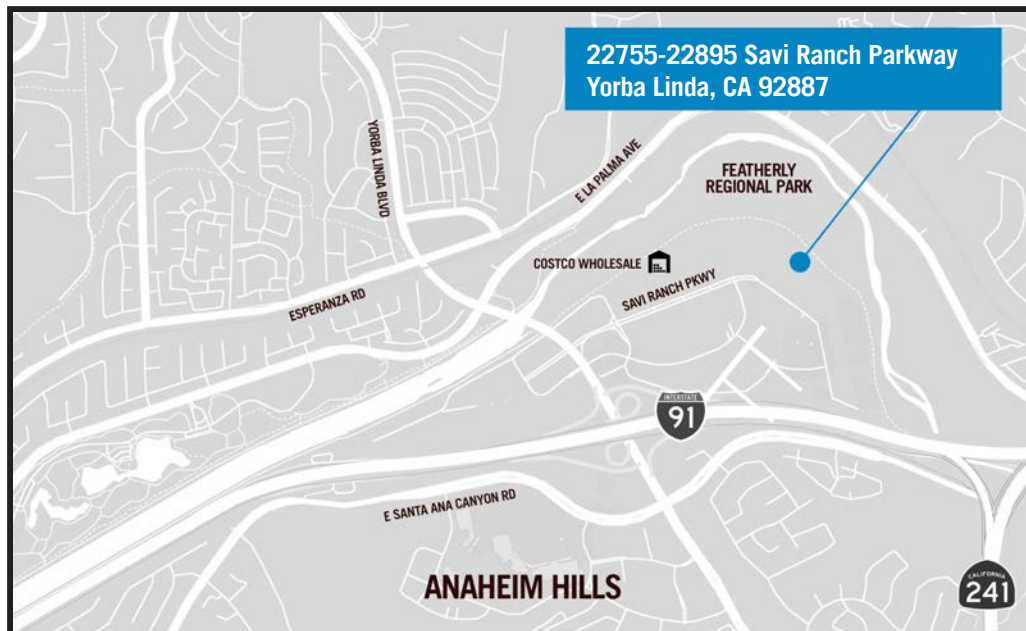
- Air Conditioned / Heated
- Min. 1 Private Office

### OTHER FEATURES:

- Ample Parking
- Freshly Painted



**22755-22895 Savi Ranch Parkway  
Yorba Linda, CA 92887**



This information has been furnished from sources which we deem reliable; however, we do not guarantee its accuracy and assume no liability. Do not rely on any of the information contained herein without verifying it yourself directly with the listing broker or owner.

## FOR FURTHER DETAILS:

**REN GLANZ**

ren@tricoREALTY.com  
License #01192242

**Trico Realty, Inc.**

3100-A Pullman Street  
Costa Mesa, CA 92626  
(714) 751-4420 • License #00342120

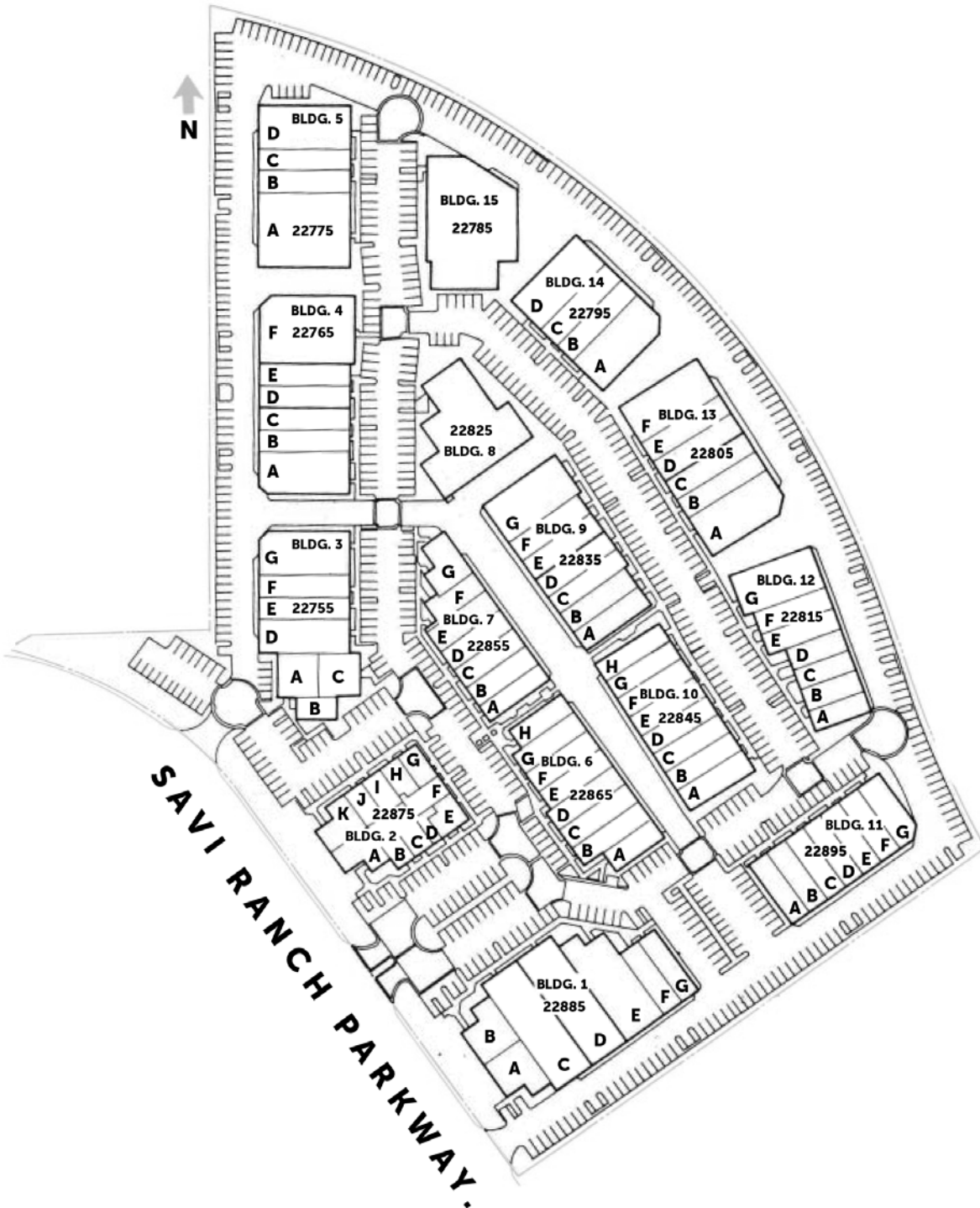
For additional information  
Visit our Website at [www.TricoRealty.com](http://www.TricoRealty.com)



22755-22895 Savi Ranch Parkway  
Yorba Linda, CA 92887

**FOR LEASE**

• 850-12,680 Square Foot Office Units



**Trico Realty, Inc.**

3100-A Pullman Street  
Costa Mesa, CA 92626

(714) 751-4420 • License #00342120

For additional information

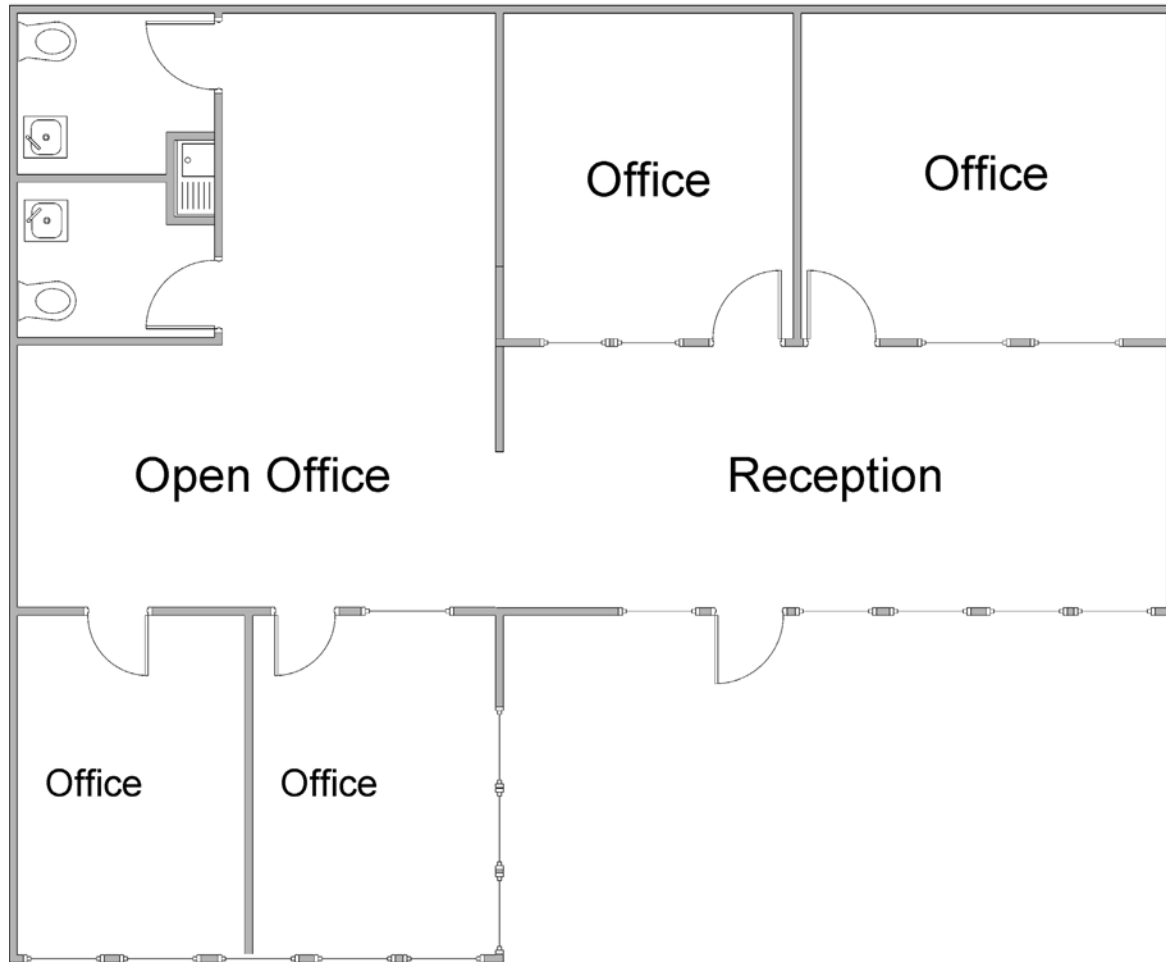
Visit our Website at [www.TricoRealty.com](http://www.TricoRealty.com)



22755-22895 Savi Ranch Parkway  
Yorba Linda, CA 92887

**FOR LEASE**

• 850-12,680 Square Foot Office Units



**Trico Realty, Inc.**

3100-A Pullman Street  
Costa Mesa, CA 92626

(714) 751-4420 • License #00342120

For additional information  
Visit our Website at [www.TricoRealty.com](http://www.TricoRealty.com)

