

**FOR LEASE**

**1,400 - 4,000 Square Foot Units**



**FEATURES:**

**OFFICE FEATURES:**

- Air Conditioned / Heated
- Fully Carpeted
- Coffee Bar

**WAREHOUSE FEATURES:**

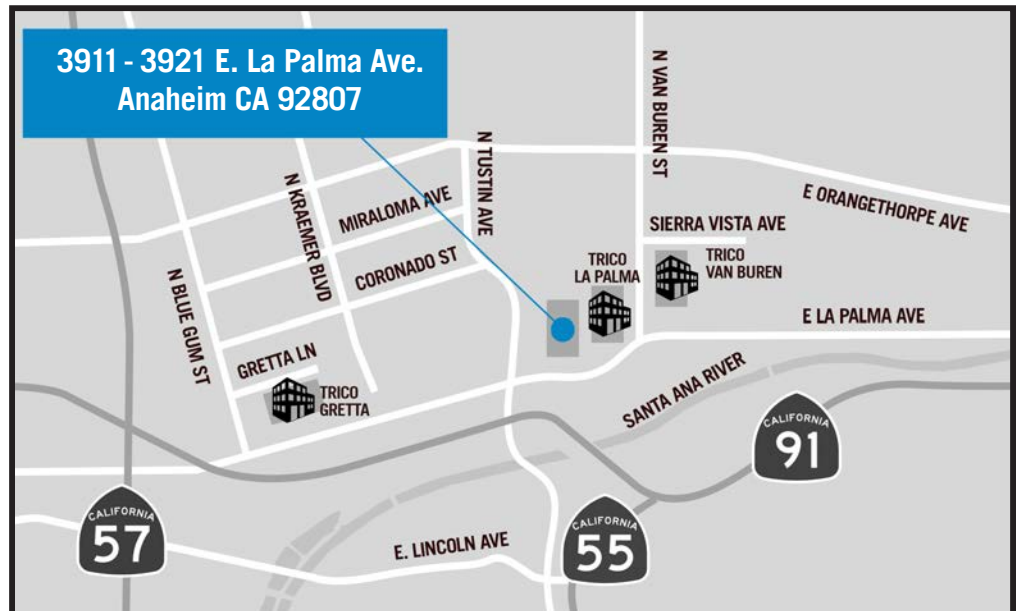
- Min. 100 AMP, 3 Phase Power
- 10' x 12' Ground level Door
- 15' Clearance

**OTHER FEATURES:**

- Full Exterior Remodel
- Major Street Frontage
- Drive Around Building
- Sprinklered
- Exterior Security Lighting
- Freeway Close to 55, 57, & 91



**3911 - 3921 E. La Palma Ave Anaheim, CA 92807**



This information has been furnished from sources which we deem reliable; however, we do not guarantee its accuracy and assume no liability. Do not rely on any of the information contained herein without verifying it yourself directly with the listing broker or owner.

**FOR FURTHER DETAILS:**

**REN GLANZ**

ren@tricoREALTY.com  
License #01192242

**JOHN PAK**

michelle@tricoREALTY.com  
License #01483069

**Trico Realty, Inc.**

3100-A Pullman Street  
Costa Mesa, CA 92626  
(714) 751-4420 • License #00342120

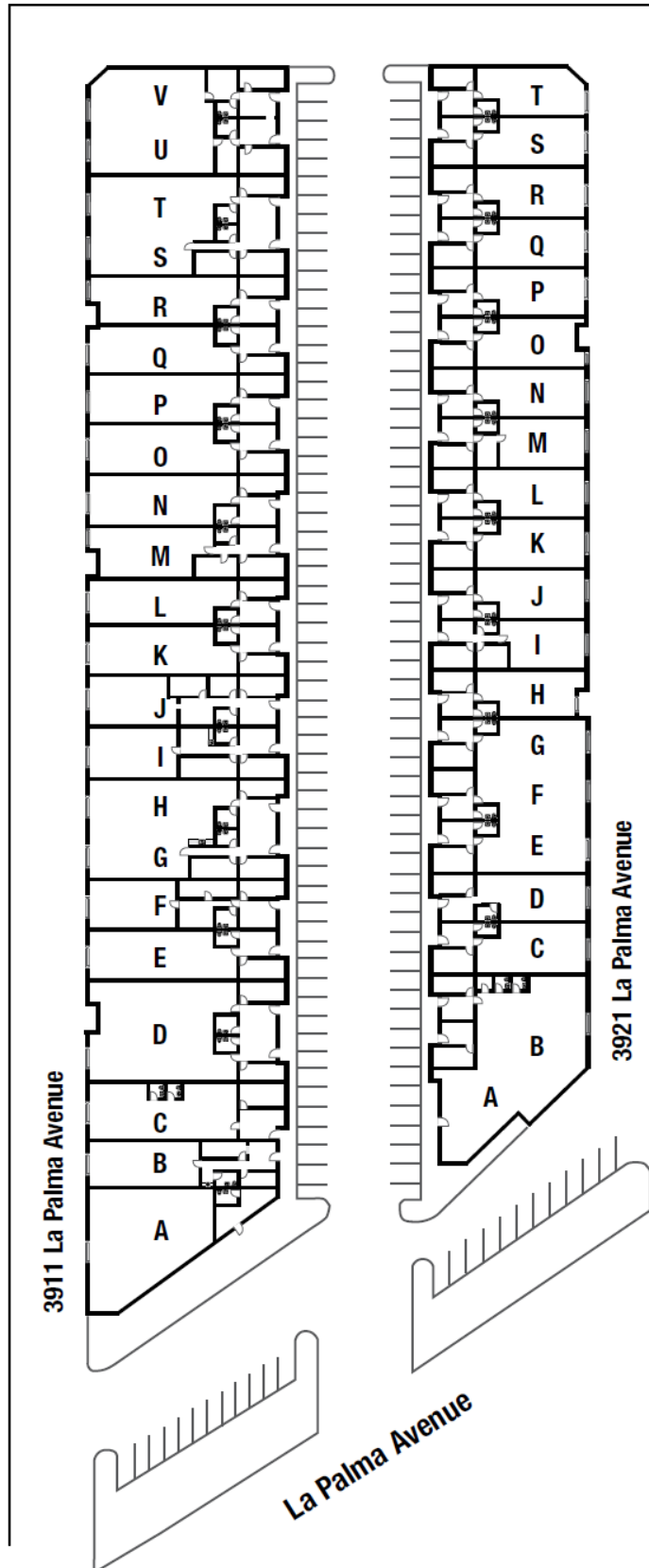
For additional information  
Visit our Website at [www.TricoRealty.com](http://www.TricoRealty.com)



3911 - 3921 E. La Palma Avenue  
Anaheim, CA 92807

**FOR LEASE**

1,400 - 4,000 Square Foot Units



**Trico Realty, Inc.**

3100-A Pullman Street  
Costa Mesa, CA 92626

(714) 751-4420 • License #00342120

For additional information

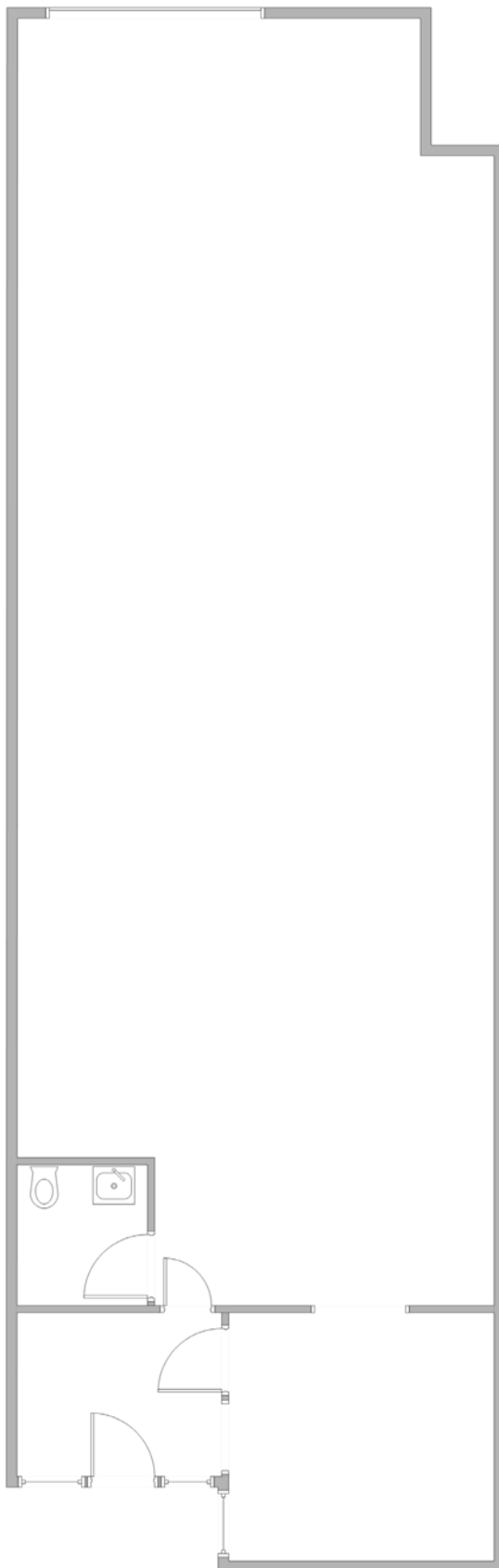
Visit our Website at [www.TricoRealty.com](http://www.TricoRealty.com)



3911 - 3921 E. La Palma Avenue  
Anaheim, CA 92807

**FOR LEASE**

1,400 - 4,000 Square Foot Units



**Trico Realty, Inc.**

3100-A Pullman Street  
Costa Mesa, CA 92626

(714) 751-4420 • License #00342120

For additional information  
Visit our Website at [www.TricoRealty.com](http://www.TricoRealty.com)

