



**FOR LEASE**

• 1,000 - 4,000 Square Foot Units

**FEATURES:**

- HVAC in Offices
- 100% Office Available
- Minimum Clear Height 14' to 16'
- Ground Level Doors
- Exterior Security Lighting
- 100 Amps, 110/208 Volt, 3 Phase
- Secured Trash Enclosures
- Street Frontage Units



**13600 -13640 Imperial Highway  
Santa Fe Springs, CA 90670**



This information has been furnished from sources which we deem reliable; however, we do not guarantee its accuracy and assume no liability. Do not rely on any of the information contained herein without verifying it yourself directly with the listing broker or owner.

**FOR FURTHER  
DETAILS:**

**JOHN PAK**

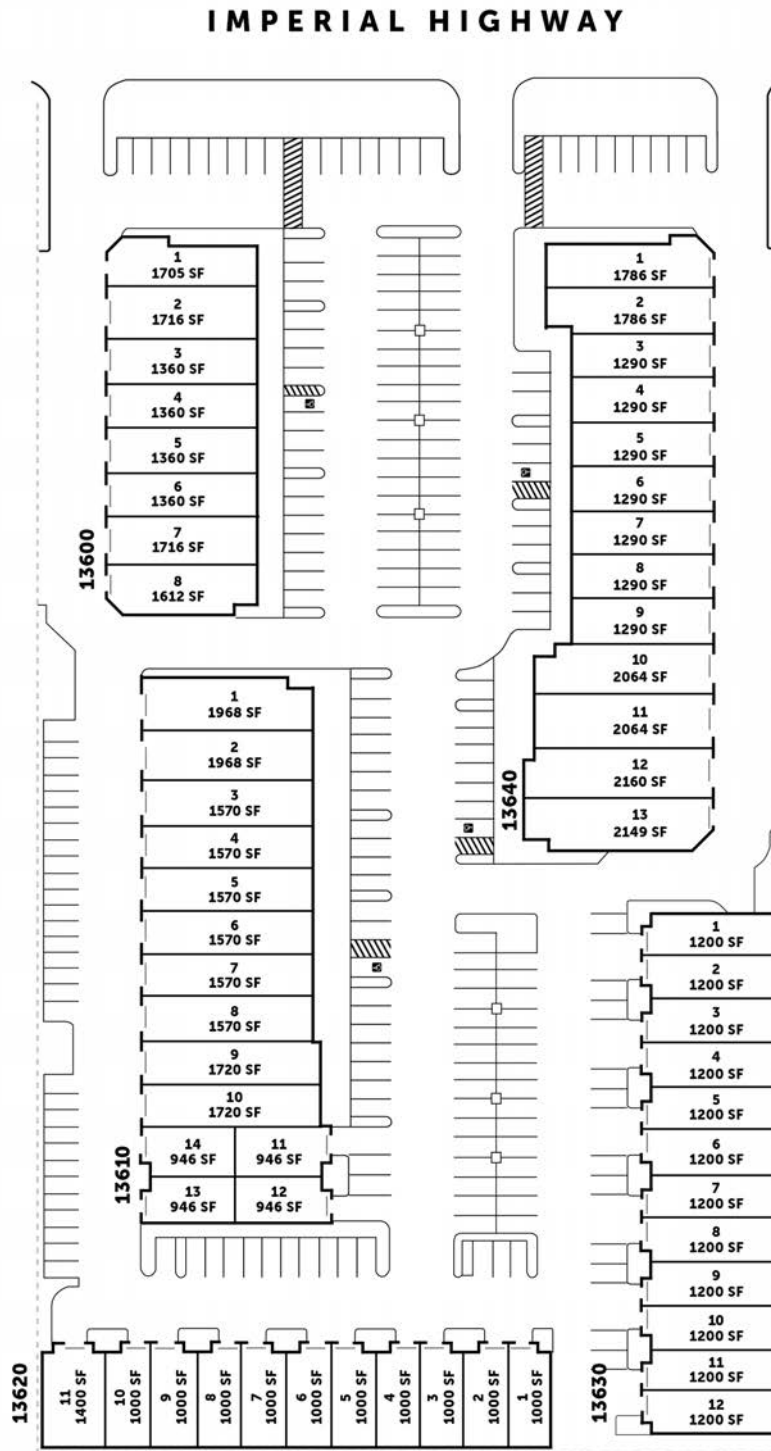
john@tricoREALTY.com  
License #01483069

**Trico Realty, Inc.**

3100-A Pullman Street  
Costa Mesa, CA 92626  
(714) 751-4420 • License #00342120

For additional information  
Visit our Website at [www.TricoRealty.com](http://www.TricoRealty.com)

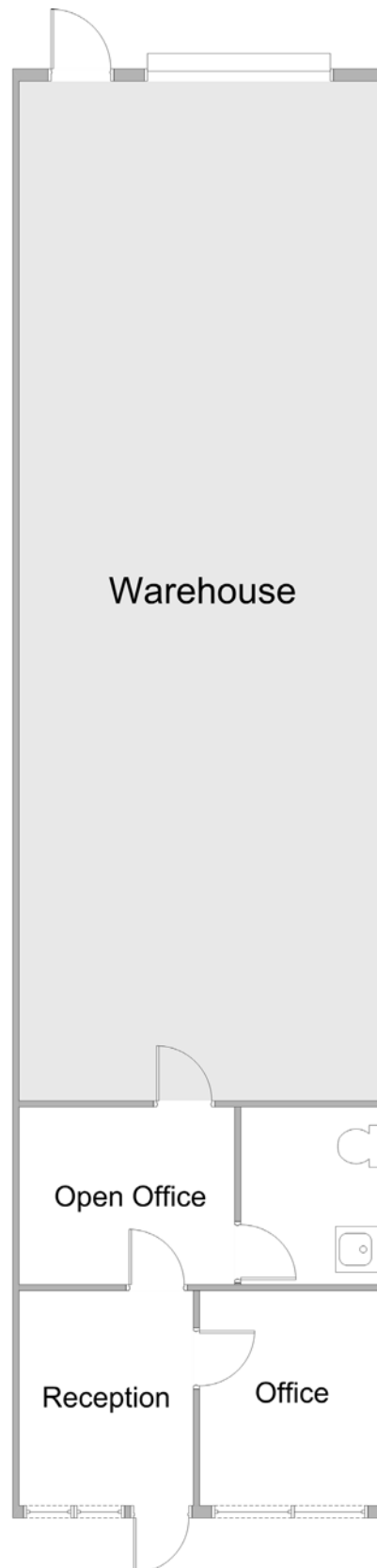




13600 - 13640 Imperial Highway  
Santa Fe Springs, CA 90670

**FOR LEASE**

• 1,000 - 4,000 Square Foot Units



**Trico Realty, Inc.**

3100-A Pullman Street  
Costa Mesa, CA 92626

(714) 751-4420 • License #00342120

For additional information  
Visit our Website at [www.TricoRealty.com](http://www.TricoRealty.com)

