



**FOR LEASE**

**1,100-2,304 Square Foot Units**

**FEATURES:**

- Airport, 405, 55, & 73 Freeway Close
- Private Front Office
- Renovated Office
- Time Warner Business Class Cable
- Restroom

**WAREHOUSE FEATURES:**

- 12' X 12' Rear Overhead Doors
- 40-100 Amps / Single & 3 Phase Power
- 14' Clearance
- Exterior Security Lighting
- Fire Sprinklers (Buildings 2931, 2940 & 2941)



**2930-2941 Grace Lane, Costa Mesa, CA 92626**



**FOR FURTHER DETAILS:**

**DAVID KLING**

david@tricoREALTY.com  
License #01965659

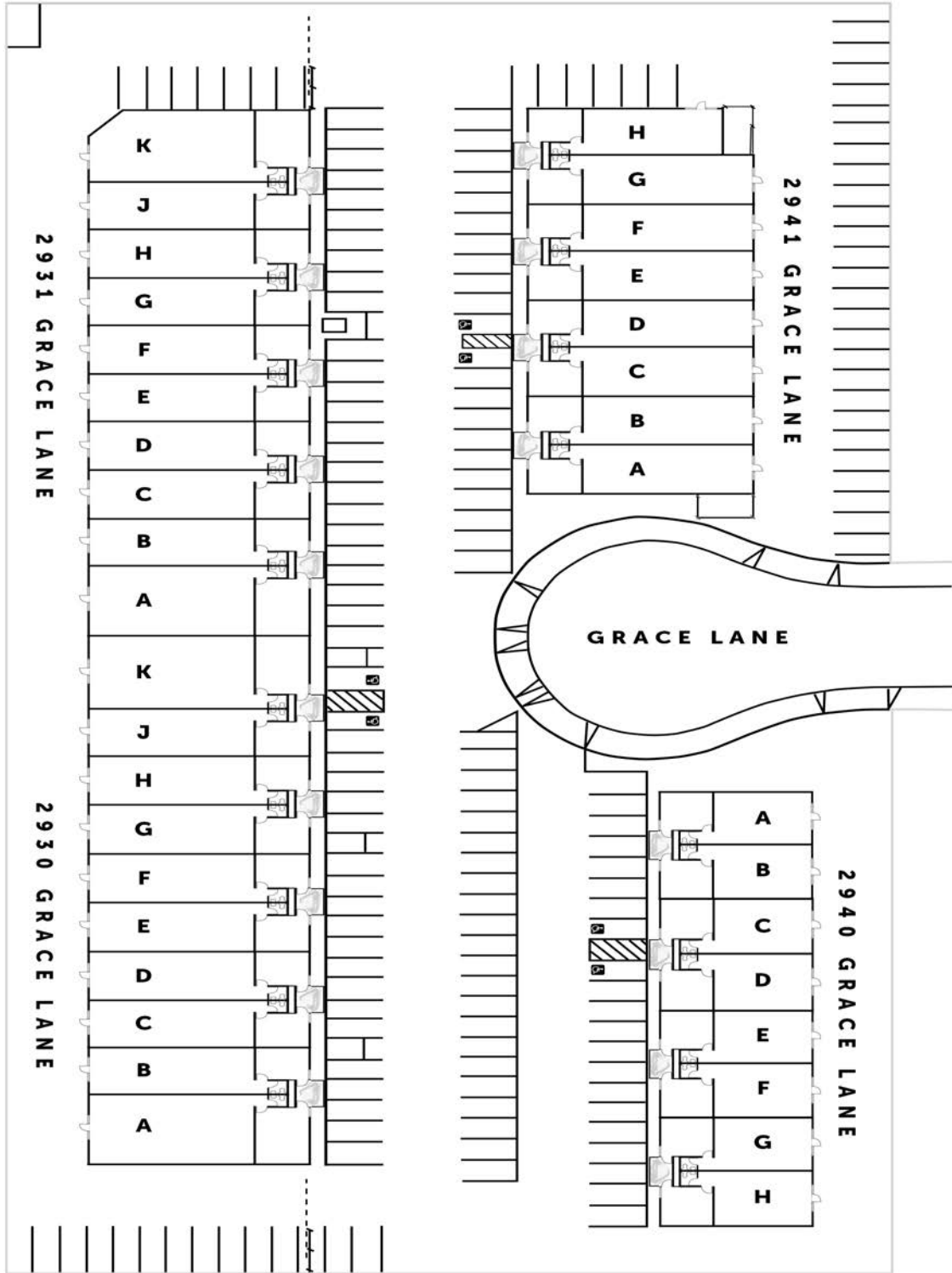
**Trico Realty, Inc.**

3100-A Pullman Street  
Costa Mesa, CA 92626  
(714) 751-4420 • License #00342120

For additional information  
Visit our Website at [www.TricoRealty.com](http://www.TricoRealty.com)



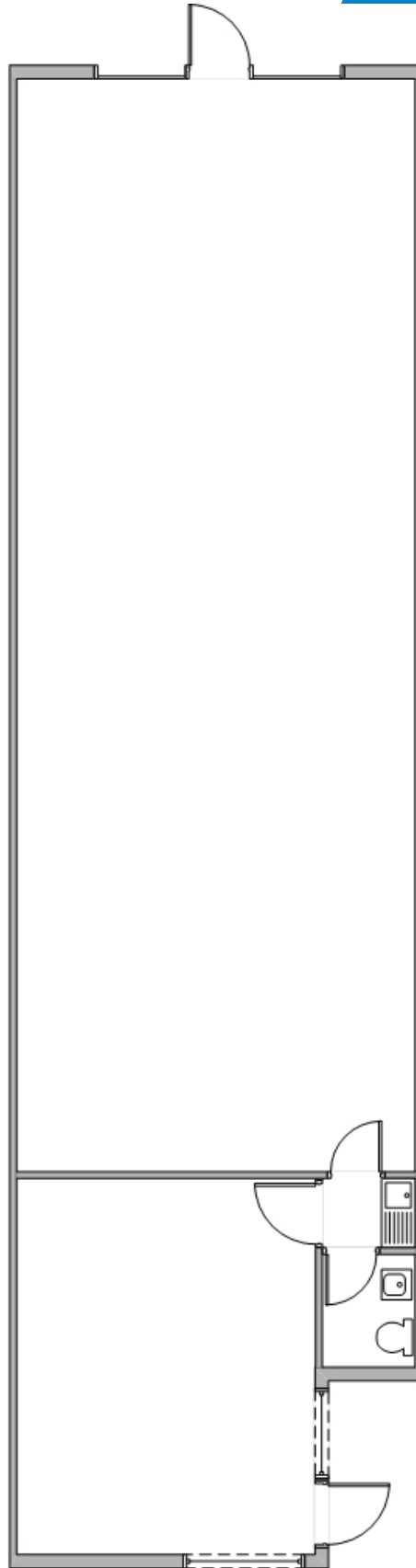
This information has been furnished from sources which we deem reliable; however, we do not guarantee its accuracy and assume no liability. Do not rely on any of the information contained herein without verifying it yourself directly with the listing broker or owner.



2930 - 2941 Grace Lane  
Costa Mesa, CA 92626

**FOR LEASE**

1,100 - 2,304 Square Foot Units



**Trico Realty, Inc.**

3100-A Pullman Street  
Costa Mesa, CA 92626

(714) 751-4420 • License #00342120

For additional information  
Visit our Website at [www.TricoRealty.com](http://www.TricoRealty.com)

