



22895 Savi Ranch Parkway, Unit B, Yorba Linda, CA, 92887  
1,968 Sq. Ft.

**For Further Information, please contact:**

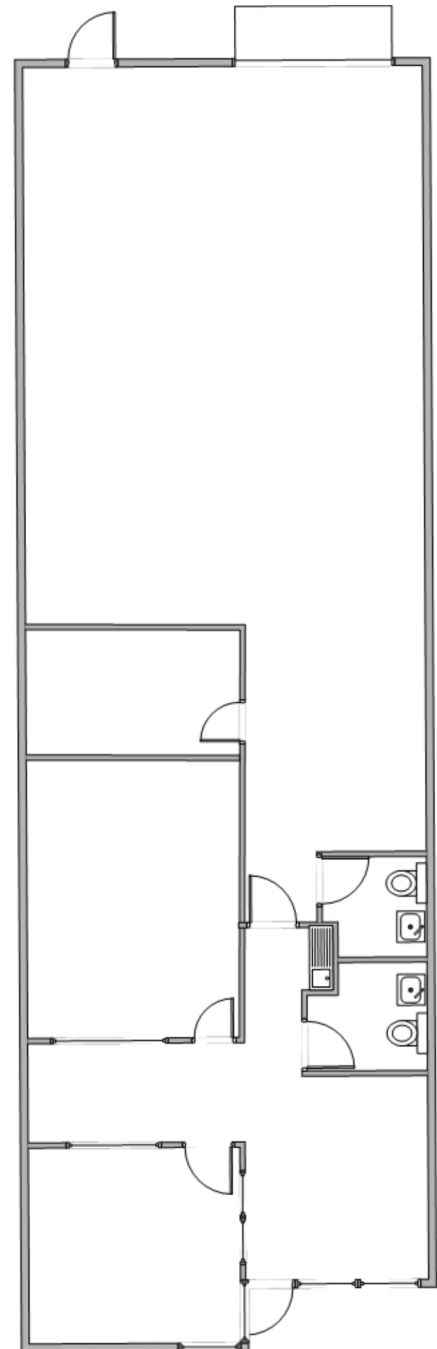
Ren Glanz  
DRE#01192242  
ren@tricoREALTY.com  
714-751-4420

Mark Hintergardt  
DRE#0096286  
mhintergardt@lee-associates.com

Pat Delaney  
DRE#00865136  
pdelaney@lee-associates.com

Visit us at  
[www.tricoREALTY.com](http://www.tricoREALTY.com)

**Not to Scale**



3100-A Pullman St.  
Costa Mesa, CA 92626

O: 714.751.4420  
F: 714.540.4579

[TricoRealty.com](http://TricoRealty.com)

**BROKERAGE  
DEVELOPMENT  
MANAGEMENT**