



22765 Savi Ranch Parkway, Unit D, Yorba Linda, CA, 92887  
2,400 Sq. Ft.

**For Further Information,  
please contact:**

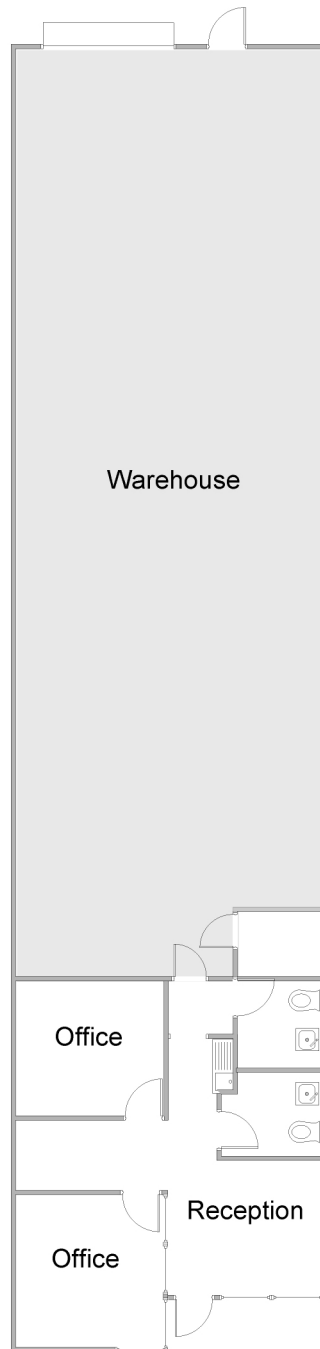
Mark Hintergardt  
DRE#0096286  
mhintergardt@lee-associates.com

Pat Delaney  
DRE#00865136  
pdelaney@lee-associates.com

Ren Glanz  
DRE#01192242  
ren@tricoREALTY.com  
0096286/00865136

Visit us at  
[www.tricoREALTY.com](http://www.tricoREALTY.com)

**Not to Scale**



3100-A Pullman St.  
Costa Mesa, CA 92626

O: 714.751.4420  
F: 714.540.4579

**TricoRealty.com**

**BROKERAGE  
DEVELOPMENT  
MANAGEMENT**